

2022 Land Budget Expenditure Review

Platte River Recovery Implementation Program

For More Information Contact: Jason Farnsworth, farnsworthj@headwaterscorp.com (308) 237-5728

Land Budget Overview By Budget Line Item

Budget Line Item	Description	Estimated Expenditure*	Actual Expenditure*
LP-2	Adaptive Management Species Habitat Actions	\$335,309	\$246,124
LP-3	New Land Acquisitions, LHIE Fees, & Property Taxes	\$864,000	\$244,414
LP-4	Property Maintenance & Agricultural Operations	\$165,000	\$212,851
LP-6	Land Plan Special Advisors	\$20,000	\$10,846
LP-7	Public Access Management	\$40,000	\$40,000
WPLW-1	Property Taxes & Maintenance for Water Properties	\$16,850	\$16,885

* The budget items have been reviewed and approved by the LAC on February 22, 2023.

Budget Overview By Complex

Complex	Estimated Expenditure	Actual Expenditure	Estimated Income	Actual Income
Non-Complex Tracts	\$59,700	\$104,226	\$21,770	\$27,188
Plum Creek "Complex"	\$53,800	\$39,638	\$8,550	\$9,098
Cottonwood Ranch Complex	\$62,650	\$56,628	\$8,360	\$17,407
Elm Creek Complex	\$25,823	\$26,186	\$15,925	\$14,915
Pawnee Complex	\$46,857	\$21,085	\$3,773	\$2,983
Fort Kearny Complex	\$68,480	\$46,832	\$44,645	\$49,205
Minden-Gibbon Complex	\$5,000	\$0	\$0	\$0
Clark Island Complex	\$89,440	\$44,329	\$33,340	\$27,865
Shoemaker Island Complex	\$17,459	\$23,966	\$43,000	\$49,362
Chapman Complex	\$71,100	\$96,085	\$37,998	\$53,265
Water Properties	\$16,850	\$16,885	\$9,125	\$10,480
Total	\$517,159	\$475,860	\$226,486	\$261,768

Budget Priority Areas by Budget Line Item

LP-2 – Adaptive Management Species Habitat Actions: Species habitat priorities are focused on creation and maintenance of suitable complex and non-complex habitat for Program target species. Includes Habitat Enhancement at Tract 2020002 & Chapman Complex

LP-3 – New Land Acquisitions: Land acquisition priorities include identification and acquisition of lands for construction of an additional 60 acres of off-channel sand and water habitat for least tern and piping plover nesting habitat and identification and acquisition of lands that could count towards the First Increment Extension habitat land "plus up" of 1,500 acres.

LP-4 – Property Maintenance & Agricultural Operations: Priorities include maintenance of basic land infrastructure such as facilities, roads, and fences as well as fulfilling basic ownership obligations like noxious weed control and ROW mowing.

LP-6 – Land Plan Special Advisors: Priorities for special advisors include administration of agricultural leases and associated FSA obligations, crop management and marketing, and assistance in cropland conversions.

LP-7 – Public Access Management: Nebraska Game and Parks Commission will manage public access to Program lands.

WPLW-1 – Property Maintenance for Water Properties: Priorities include maintenance of basic land infrastructure such as facilities, roads, and fences as well as fulfilling basic ownership obligations like noxious weed control and ROW mowing.

Property Identification Key:

2008001 – PRRIP Wyoming Property
2008002 - NPPD Cottonwood Ranch
2009001 – PRRIP Fox Tract
2009002 – PRRIP Bartels Tract
2009003 - PRRIP Dyer Tract
2009004 – PRRIP Hostetler Tract
2009005 – PRRIP McCormick Tract
2009006 - PRRIP Stall Tract
2009007 - PRRIP Cook Tract
2009008 - PRRIP Broadfoot Newark Tract
2010001 - PRRIP Morse Tract
2010002 - Broadfoot Kearney South Tract
2010003 – PRRIP Sherrerd/Clark Easement
2010004 – PRRIP Binfield Tract
2011001 - PRRIP East Leaman Tract
2011002 - PRRIP Follmer Alda Tract
2012001 – PRRIP Sullwold Tract
2012002 – PRRIP Johns Tract
2012003 – PRRIP Blessing Tract
2012004 - PRRIP DeBore Tract
2013001 - PRRIP Liehs Tract
2014002 - PRRIP Volentine Tract
2015001 – PRRIP Speidell Tract
2015002 - PRRIP BELF Tract
2015003 – PRRIP Blue Hole East
2018001 – PRRIP Dippel Tract
2019001 – PRRIP Robinson Tract
2020001 – PRRIP Bergren Tract
2020002 - PRRIP OSG-Lex Pit Tract
2021001 – PRRIP Meyer Tract

W201602 – PRRIP Lindstrum Tract

W201701 – PRRIP Edlund Tract

W201702 - PRRIP Albrecht Tract

W201703 - PRRIP Lakeside Tract

Personnel Responsibility Key

MH – Malinda Henry (Director of Biological and Ecological Services)

JJ – Jim Jenniges (NPPD)

TT – Tim Tunnell (Senior Land Manager)

ST – Seth Turner (Senior Water Resources Engineer)

LP-2	Priority Area: Species Habitat		Budget	Expenditure
	Item(s): Maintain Suitable In- and Off-Channel Sand & Water Habitat	Herbicide applications on OCSW peninsulas to maintain bare sand nesting habitat	\$38,500	\$31,470
		Maintenance of Predator Exclusion Fencing	\$15,000	\$13,837
		Remove Blow Sand from Predator Fences	\$4,000	\$0
		Fenceline Tree Removal & Prep		\$7,575
		Woven Wire Fence Installation		\$37,930
	Item(s): Improve Target Species Sand and Water Habitat	Remove large cottonwood trees south of OCSW area	\$25,000	\$20,000
		In-channel tree. Cattail, herbicide spraying	\$12,000	\$0
		Herbicide treatment on south bank to kill vegetation prior to disking	\$21,800	\$14,006
		Disking if necessary to provide in-channel vegetation control	\$21,900	\$45,213
		Clear downed trees from northern riparian area	\$25,000	\$0
		Clear Trees, burn & bury pending Mgmt. Agreement	\$30,000	\$0
		Burn & Bury Tree Piles		\$9,500
	Item(s): Maintain Suitable Palustrine Wetland Habitat	Irrigation Well Pumping	\$7,000	\$7,871
		Brush, tree, cattail herbicide spraying	\$38,500	\$21,737
	Item(s): Whooping Crane Grassland / Wet Meadow Habitat	Prescribed Burning	\$70,609	\$0
		Purchase & installation of native violet plugs	\$6,000	\$5,500
		Aboveground Tree Removal in meadow	\$20,000	\$21,000
		Crane Viewing Blind Construction		\$10,485
		Total	\$335,309	\$246,124

LP-3	Priority Area: Land Acquisitions , LHIE Fees, & Property Taxes		Budget	Expenditure
	Item(s): Land Acquisition, Property Taxes and Associated Fees	Land interest holding entity (LIHE)	\$65,000	\$24,659
		Property Taxes	\$165,000	\$148,885
		Land Acquisition Associated Costs	\$16,750	\$36,370
		Cottonwood Ranch Sponsorship Agreement	\$17,000	\$22,500
		Buy, Lease or Easement (~100 acres)	\$600,000	\$12,000
		Total	\$863,750	\$244,414

LP-4	Priority Area: Operations and Maintenance		Budget	Expenditure
	Item(s): <i>Basic Property Maintenance</i> <i>Obligations and Needs</i>	Fence & Road Maintenance	\$53,000	\$90,837
		Noxious Weed Control	\$60,500	\$73,428
		Mowing	\$19,500	\$25,700
		Lodge & Quonset Utilites & maintenance	\$5,600	\$6,261
		Cabin Utilites & maintenance	\$3,000	\$3,459
		Meyer House Maintenance & Utilities		\$1,299
		Fenceline Tree Clearing	\$20,000	\$2,952
		Electricity for Livestock wells	\$3,400	\$4,154
		Parking Area Construction		\$3,458
		Blind Removal & Landfill Fees		\$1,303
		Total	\$165,000	\$212,851

WPLW-1	Priority Area: Water Tract Operations and Maintenance		Budget	Expenditure
	Item(s): <i>Basic Property Maintenance</i> <i>Obligations and Needs</i>	Fence & Road Maintenance	\$1,000	\$0
		Noxious Weed Control	\$5,000	\$6,474
		Mowing	\$1,000	\$0
		Electricity for Livestock wells	\$100	\$184
		Property Taxes	\$9,750	\$10,227
		Total	\$16,850	\$16,885

2022 Non-Complex Properties Annual Work Plan Report

General Priorities

- * **Good Neighbor Policy** - *Conduct all actions in accordance with Program's good neighbor policy.*

Adaptive Management Priorities

- * **Species Monitoring** – Monitor whooping crane use of non-complex palustrine wetlands and least tern and piping plover use and productivity at off-channel sand and water nesting sites.

Species Habitat Priorities

- * **Maintain Suitable Off-Channel Sand and Water Nesting Habitat** – Apply pre-emergent herbicide on Tracts 2009008, 2010002, 2011001, 2011002 and 2020002 OCSW nesting habitat to prevent vegetation encroachment into nesting areas.
- * **Maintain Suitable Palustrine Wetland Roosting Habitat** – Manage vegetation height in the palustrine wetland areas of Tracts 2012004 and 2013001 to maintain suitable unobstructed view widths for whooping crane roosting.
- * **Protecting Other Species of Concern** – Identify presence of and determine methods to protect other species of concern during implementation of land-related activities.

Operations and Maintenance Priorities

- * **Basic Property Maintenance Obligations and Needs** – Fulfill basic property ownership obligations and needs including boundary fence signage, road maintenance, and noxious weed control.
- * **Agricultural Operations** – Oversight of crop leases on Tracts 2009008, 2012004 and 2013001 and hay lease on Tract 2011001.
- * **Sand and Gravel Mining Operations** – *Monitor sand and gravel mining operations on Tracts 2009008 and 2011002.*

NOTE: The budget section of this work plan only contains information for work items that are specific to these tracts. As such, tract-specific research and monitoring actions are presented but system-scale actions like target species and geomorphology/vegetation monitoring are not.

Priority Area: *General*

Item(s): *Land Interest and Tract-Level Restoration and Maintenance Planning*

No.	Management Activities	Budget Line Item	Completed	Cost (Estimated)	Cost (Actual)
NC 1	Coordination of Program land actions with neighboring landowners	N/A	yes	N/A	N/A

Priority Area: *Species Habitat*

Item(s): *Maintain Suitable In- and Off-Channel Sand & Water Habitat*

No.	Management Activities	Budget Line Item	Completed	Cost (Estimated)	Cost (Actual)
NC 2	Herbicide applications on OCSW peninsulas to maintain bare sand nesting habitat (79 ac)	LP-2	yes	\$30,000	\$22,819
NC 3	Maintenance of Predator Exclusion Fencing	LP-2	yes	\$15,000	\$13,837

Priority Area: *Species Habitat*

Item(s): *Maintain Suitable Palustrine Wetland Habitat*

No.	Management Activities	Budget Line Item	Completed	Cost (Estimated)	Cost (Actual)
NC 4	Irrigation well pumping to augment water level in wetland area of Tract 2013001	LP-2	yes	\$3,000	\$5,803
NC5	Brush, tree, cattail herbicide spraying	LP-2	yes	\$3,500	\$8,230

Priority Area: *Species Habitat***Item(s):** *Other Species of Concern*

No.	Management Activities	Budget Line Item	Completed	Cost (Estimated)	Cost (Actual)
NC 6	Habitat and species surveys on properties where work will occur	N/A	N/A	N/A	N/A
NC 7	Coordination with USFWS and NGPC to identify and mitigate potential impacts associated with land activities	N/A	N/A	N/A	N/A

Priority Area: Operations and Maintenance**Item(s):** *Basic Property Maintenance Obligations and Needs*

No.	Management Activities	Budget Line Item	Completed	Cost (Estimated)	Cost (Actual)
NC 8	Fence and road maintenance	LP-4	no	\$2,500	\$0
NC 9	Noxious weed control	LP-4	yes	\$3,000	\$6,267
NC 10	Mowing	LP-4	no	\$1,500	\$0
NC 11	Tract 2012004 Electricity	LP-4	yes	\$1,200	\$1,339

Priority Area: Operations and Maintenance**Item(s):** *Agricultural Operations*

No.	Management Activities	Budget Line Item	Completed	Cost (Estimated)	Cost (Actual)
NC 12	Oversight of grazing and cropland	N/A	yes	N/A	N/A
NC 13	Oversight of sand and gravel mining	N/A	yes	N/A	N/A

Priority Area: *Unplanned Expenses*

Tract No.	Management Activities	Item:	Budget Line Item	Cost (Actual)
2020002	Woven wire fence construction	Maintain Suitable In-	LP-2	\$37,930
2020002	Woven wire fenceline tree removal & prep	Maintain Suitable In-	LP-2	\$7,575
2009008	Electricity	Basic Property	LP-4	\$426

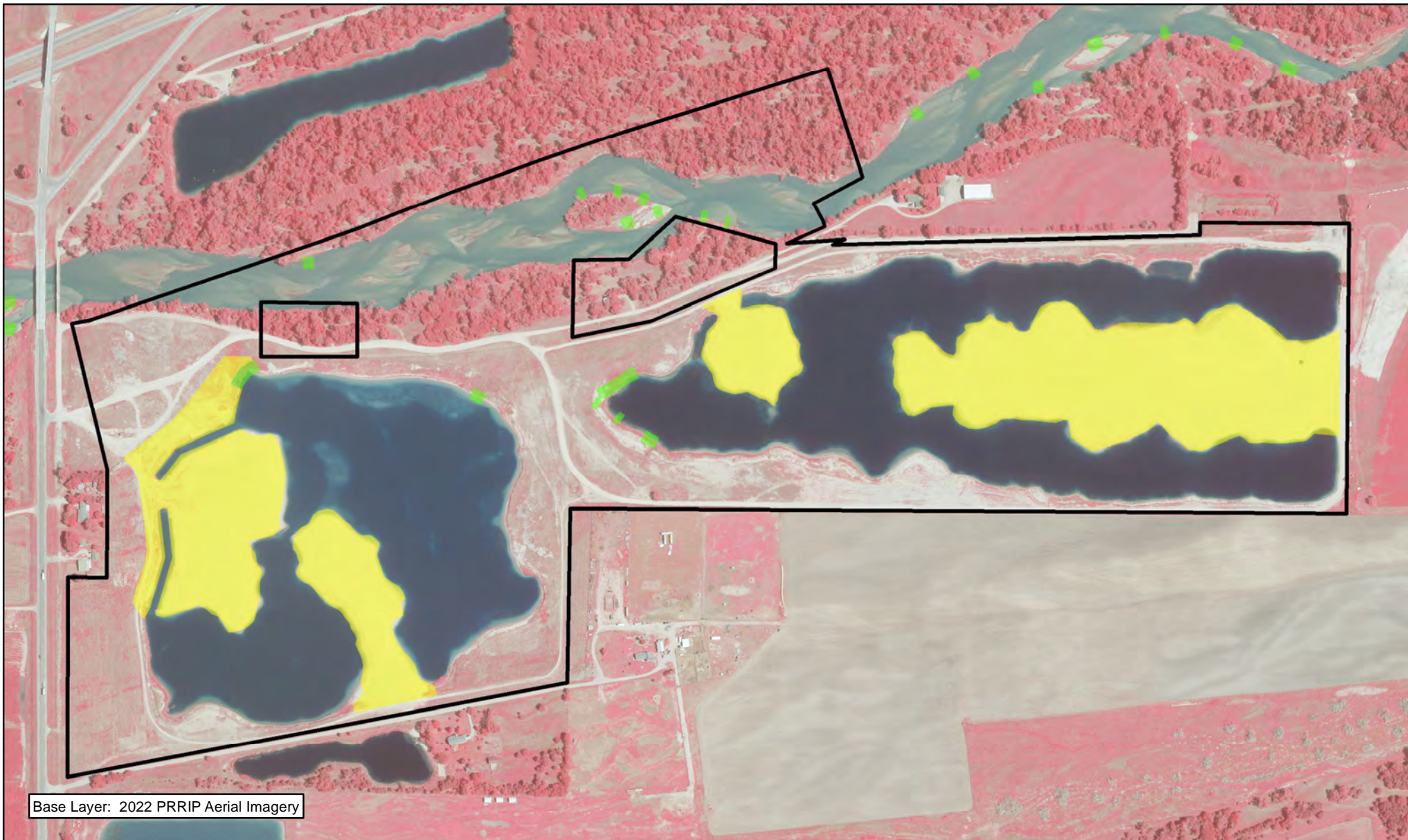
2022 Non-Complex Tracts Budget Summary

Expenditures by Program Budget Line Item



Priority Area	Item	Budget Line Item	Estimated Expenditure	Actual Expenditure
Species Habitat	Maintain Off-Channel Sand & Water Habitat	LP-2	\$45,000	\$82,161
Species Habitat	Create & Maintain Palustrine Wetland Habitat	LP-2	\$6,500	\$14,033
		Subtotal	\$51,500	\$96,194
Operations and Maintenance	Property Maintenance and Agricultural Operations	LP-4	\$8,200	\$8,032
		Total	\$59,700	\$104,226

Income

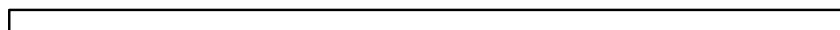
Tract	Item	Estimated Income	Actual Income
Tract 2009008	Hay Income	\$400	\$780
Tract 2011001	Hay Income	\$500	\$500
Tract 2011002	Sand & Gravel Royalties	\$2,000	\$4,846
Tract 2011002	Cropland Cash Rent Income	\$1,800	\$2,000
Tract 2012004	Cropland Cash Rent Income	\$3,600	\$3,900
Tract 2012004	Grazing Income	\$3,150	\$3,150
Tract 2013001	Irr. Cropland Cash Rent Income	\$6,600	\$7,920
Tract 2013001	Dry Cropland Cash Rent Income	\$3,720	\$4,092
Total		\$21,770	\$27,188



Legend

-  PVWMA Phrag Control
-  Preemergent



 Miles
0.5

NON-COMPLEX
TRACT 2009008
FY 2022 ACTIVITIES

Date: 01/24/2023
By: TRT




Figure 1




Base Layer: 2022 PRRIP Aerial Imagery



Legend

-  PVWMA Phrag Control
-  Herbicide
-  Preemergent

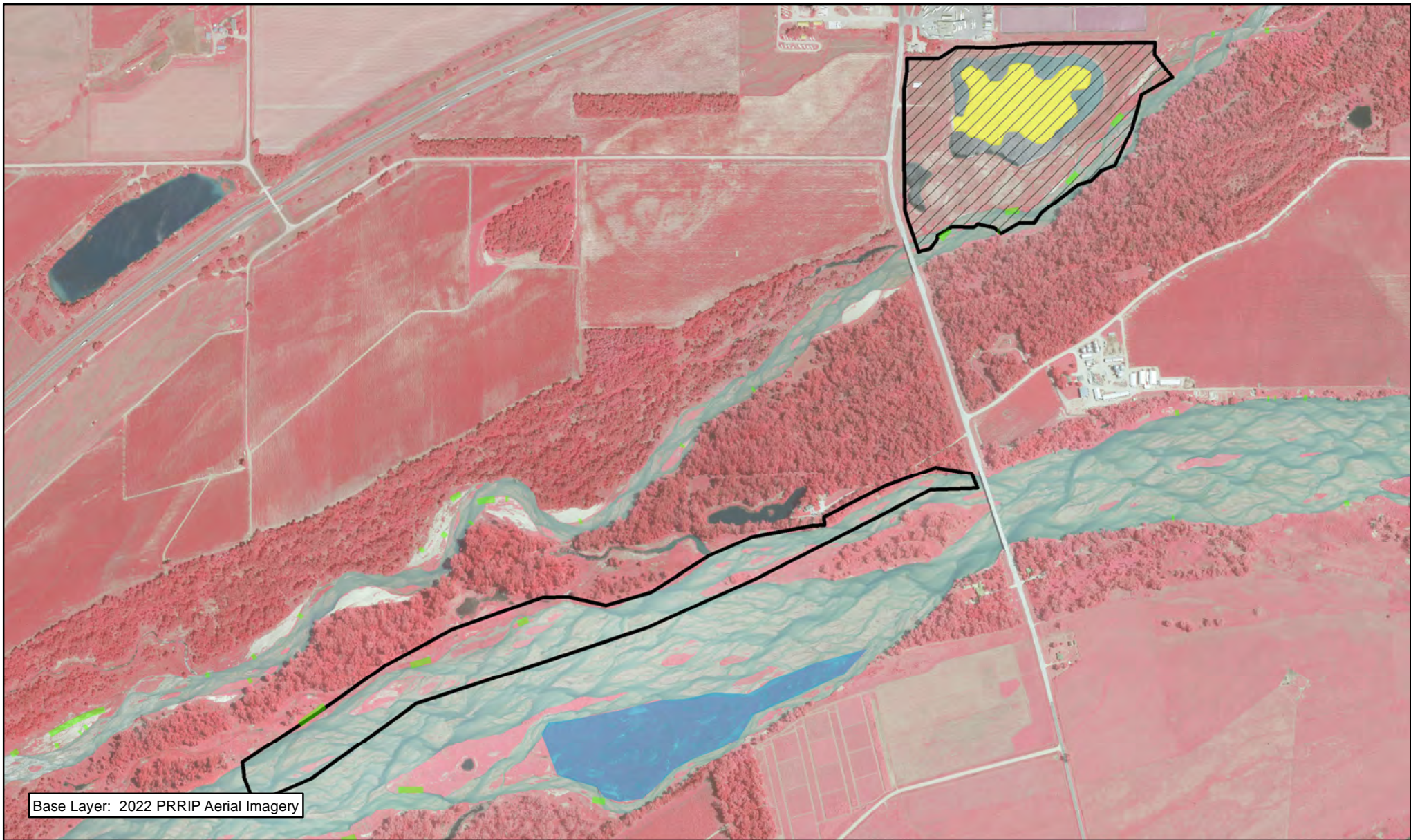


 Miles
0.1

NON-COMPLEX
TRACT 2010002
FY 2022 ACTIVITIES

Date: 02/24/2022
By: TRT






Figure 2




Base Layer: 2022 PRRIP Aerial Imagery



Legend

-  Disking
-  Noxious Weed Control
-  Herbicide
-  PVWMA Phrag Control
-  Preemergent

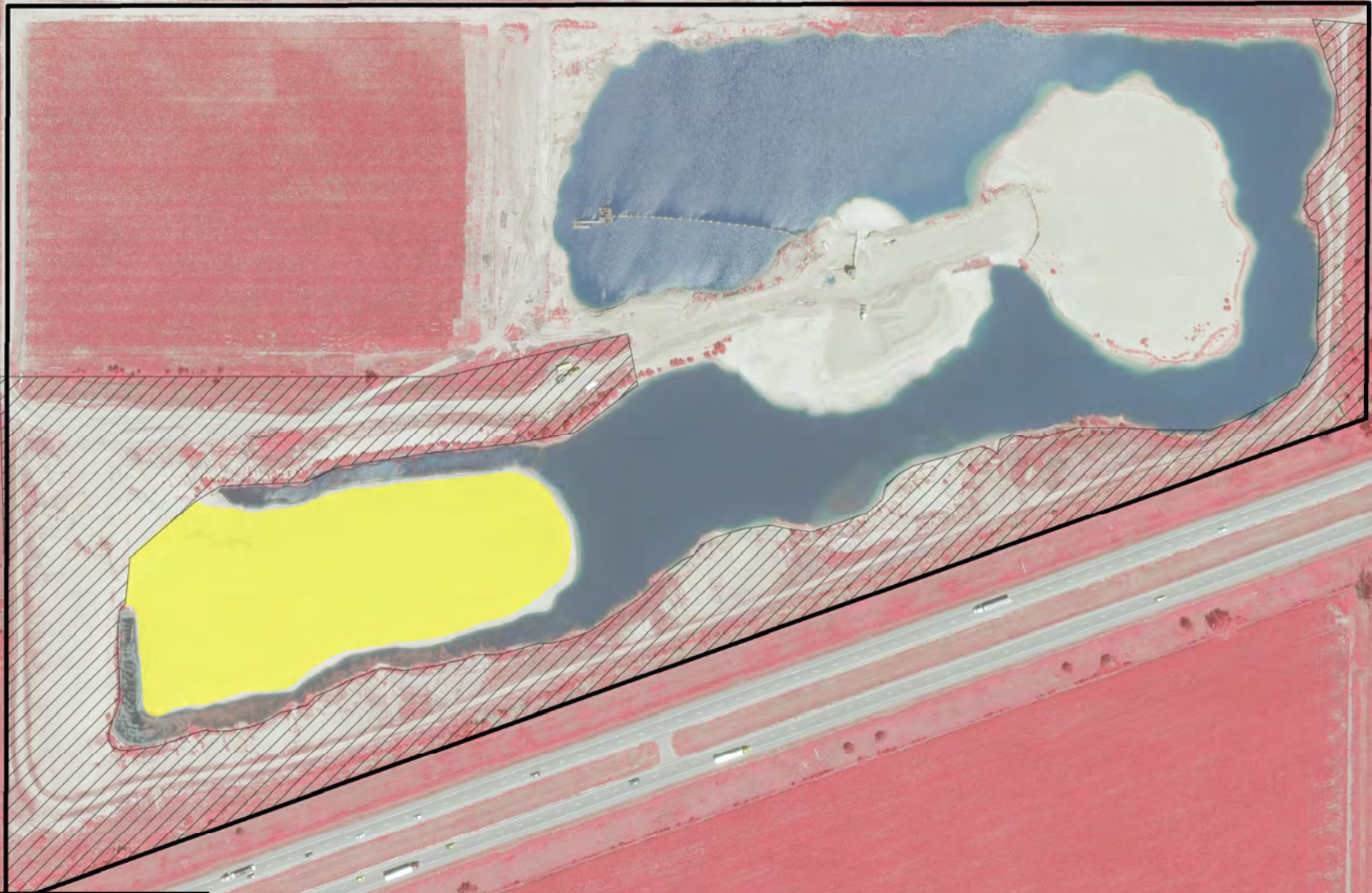


 Miles
0.5

NON-COMPLEX
TRACT 2011001
FY 2022 ACTIVITIES

Date: 01/24/2023
By: TRT



Figure 3




Base Layer: 2022 PRRIP Aerial Imagery



Legend

-  Preemergent
-  Noxious Weed Control

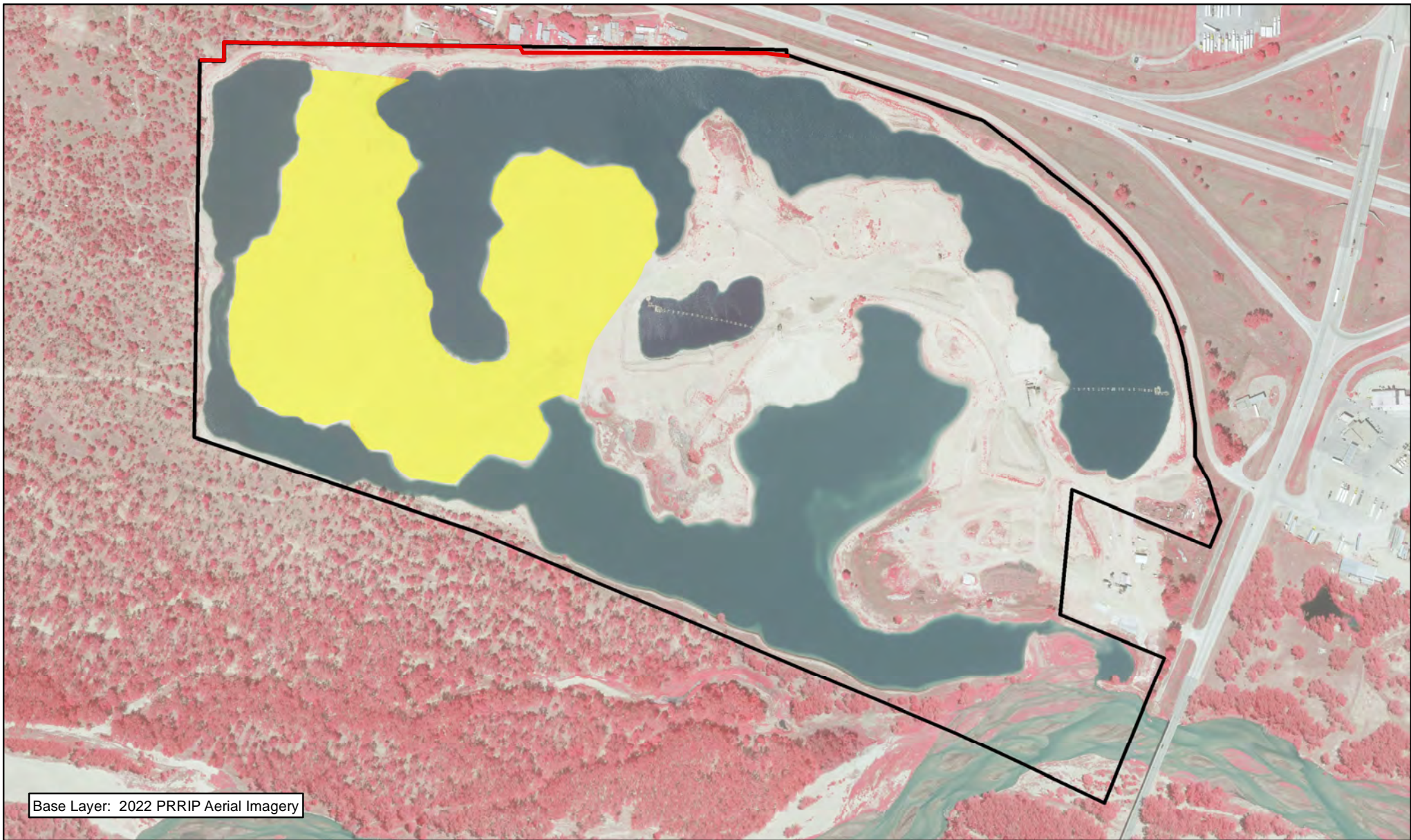


 Miles
0.1

NON-COMPLEX
TRACT 2011002
FY 2022 ACTIVITIES

Date: 01/24/2023
By: TRT




Figure 4




Base Layer: 2022 PRRIP Aerial Imagery



Legend

-  Preemergent
-  Noxious Weed Control
-  Wovenwire Fence Construction

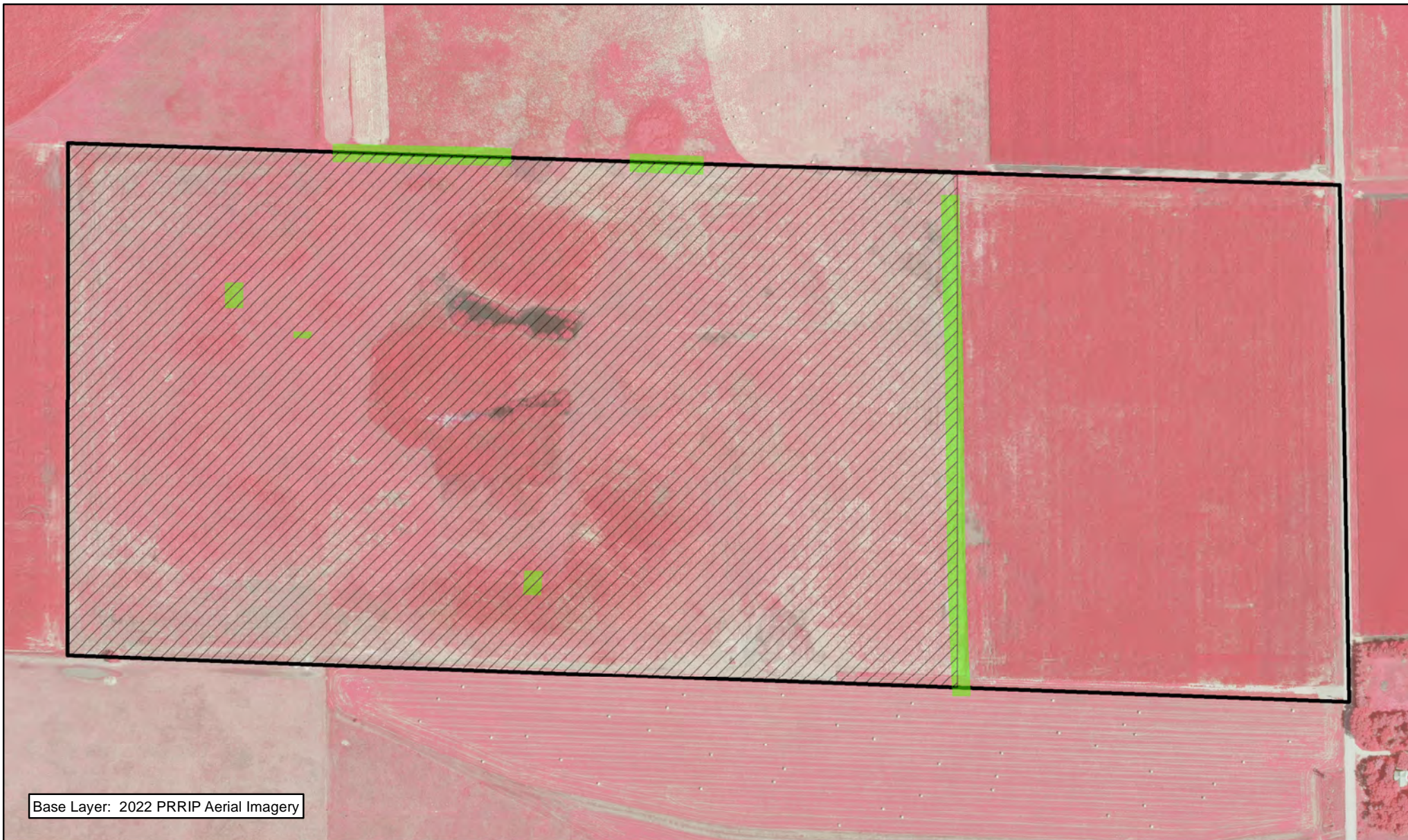


 Miles
0.25

NON-COMPLEX
TRACT 2011002
FY 2022 ACTIVITIES

Date: 01/24/2023
By: TRT



Figure 5




Base Layer: 2022 PRRIP Aerial Imagery



Legend

-  Noxious Weed Control
-  PVWMA Phragmites Spraying

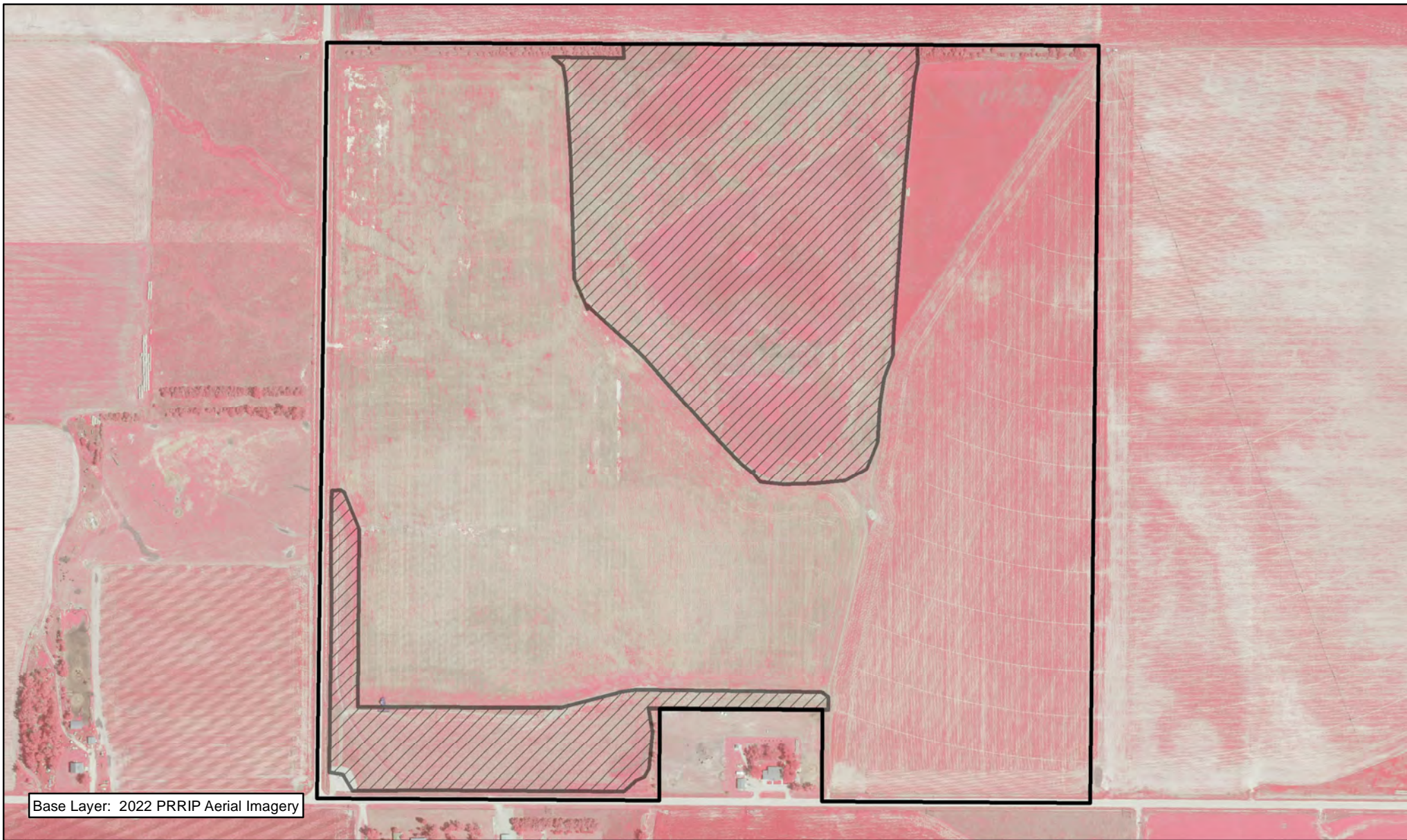


 0.2 Miles

NON-COMPLEX
TRACT 2012004
FY 2022 ACTIVITIES

Date: 01/24/2023
By: TRT


Figure 6




Base Layer: 2022 PRRIP Aerial Imagery



Legend

 Noxious Weed Control

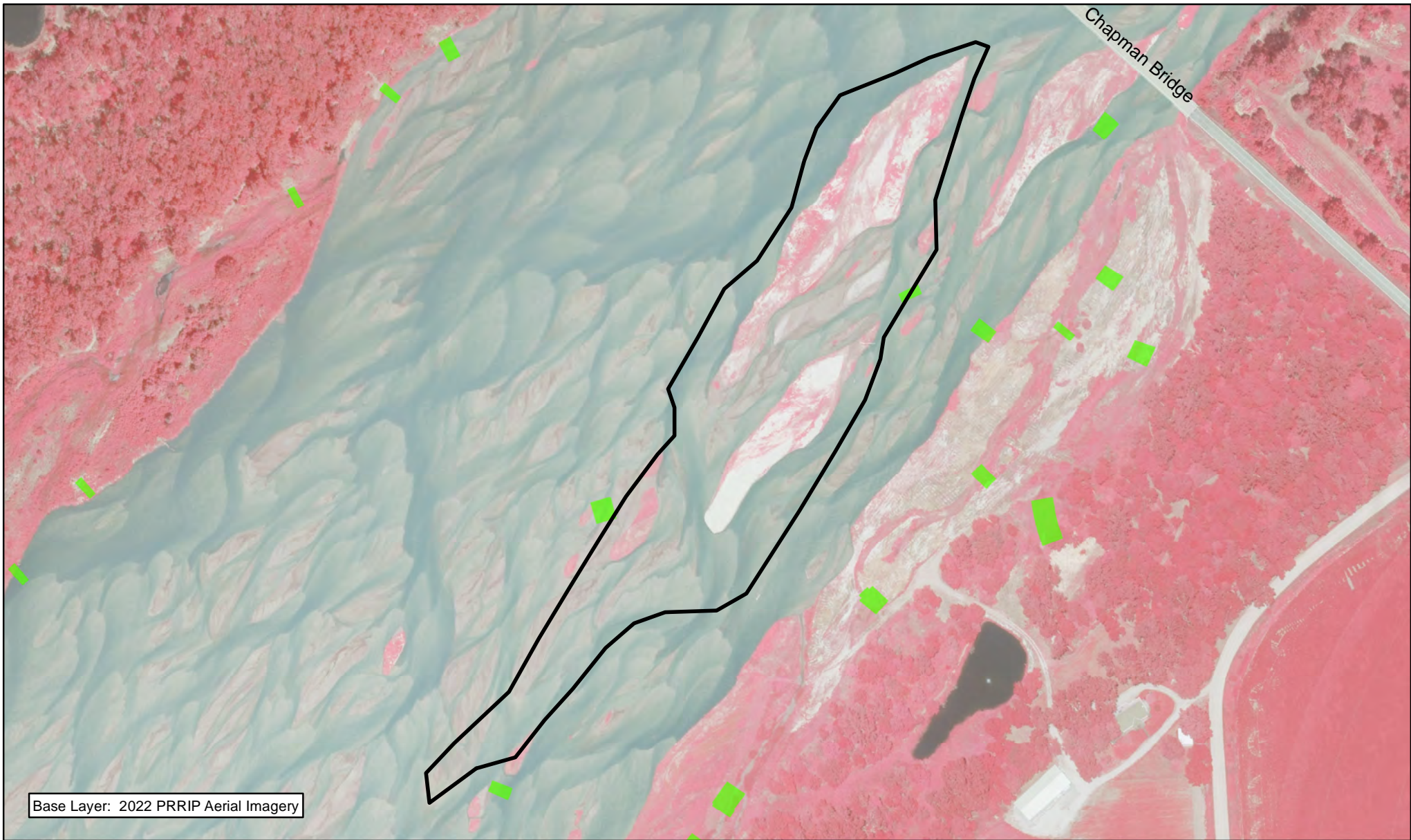


 0.2 Miles

NON-COMPLEX
TRACT 2013001
FY 2022 ACTIVITIES

Date: 01/24/2022
By: TRT

Figure 7




Base Layer: 2022 PRRIP Aerial Imagery



Legend

 PVWMA Phrag Control



 0.1 Miles

NON-COMPLEX
MCA ISLAND
FY 2022 ACTIVITIES

Date:01/24/2023
By: TRT

Figure 8

2022 Plum Creek "Complex" Annual Work Plan Report

General Priorities

- * **Good Neighbor Policy** - Conduct all actions in accordance with Program's good neighbor policy.

Adaptive Management Priorities

- * **Implementation of full scale sediment augmentation** - Augment 60,000 cubic yards of sediment through mechanical augmentation. Augmentation will occur upstream of the Plum Creek Complex near the J-2 Return.
- * **Species Monitoring** – Monitor whooping crane use of riverine roosting habitat and least tern and piping plover use and productivity at off-channel sand and water nesting sites.

Species Habitat Priorities

- * **Improve Target Species Sand and Water Habitat** – Application of pre-emergent herbicide on OCSW peninsulas to maintain tern and plover nesting habitat. Control in-channel vegetation to maintain suitable unobstructed view widths for whooping cranes.
- * **Protecting Other Species of Concern** – Identify presence of and determine methods to protect other species of concern during implementation of land-related activities.

Operations and Maintenance Priorities

- * **Basic Property Maintenance Obligations and Needs** – Fulfill basic property ownership obligations and needs including boundary fence signage, road maintenance, and noxious weed control.
- * **Agricultural Operations** – Oversight of grazing lease on Tract 2009003. Oversight of cropland/hay leases on Tract 2009007.

NOTE: The budget section of this work plan only contains information for work items that are specific to these tracts. As such, tract-specific research and monitoring actions are presented but system-scale actions like target species and geomorphology/vegetation monitoring are not.

Priority Area: General**Item(s):** *Complex Land Interest and Complex-Level Planning*

No.	Management Activities	Budget Line Item	Completed	Cost (Estimated)	Cost (Actual)
PC 1	Coordination of Program land actions with neighboring landowners	N/A	yes	N/A	N/A

Priority Area: Species Habitat**Item(s):** *Maintain Suitable In- and Off-Channel Sand & Water Habitat*

No.	Management Activities	Budget Line Item	Completed	Cost (Estimated)	Cost (Actual)
PC2	Herbicide applications on OCSW peninsulas to maintain bare sand nesting habitat (21 ac)	LP-2	yes	\$4,500	\$4,614
PC 3	Maintain blow sand from predator fences	LP-2	no	\$4,000	\$0

Priority Area: Species Habitat**Item(s):** *Improve Target Species Sand and Water Habitat*

No.	Management Activities	Budget Line Item	Completed	Cost (Estimated)	Cost (Actual)
PC 4	Remove all large Cottonwood trees along the southern edge of the OCSW	LP-2	yes	\$25,000	\$20,000

Priority Area: Species Habitat**Item(s):** *Whooping Crane Grassland / Wet Meadow Habitat*

No.	Management Activities	Budget Line Item	Completed	Cost (Estimated)	Cost (Actual)
PC 5	Tract 2009003 Prescribed burn (139 ac)	LP-2	yes	\$5,700	\$0

Priority Area: *Species Habitat***Item(s): *Other Species of Concern***

No.	Management Activities	Budget Line Item	Completed	Cost (Estimated)	Cost (Actual)
PC 6	Habitat and species surveys on properties where work will occur	N/A	N/A	N/A	N/A
PC 7	Coordination with USFWS and NGPC to identify and mitigate potential impacts associated with land activities	N/A	N/A	N/A	N/A

Priority Area: Operations and Maintenance**Item(s): *Basic Property Maintenance Obligations and Needs***

No.	Management Activities	Budget Line Item	Completed	Cost (Estimated)	Cost (Actual)
PC 8	Lodge & Quonset utilities and maintenance	LP-4	yes	\$5,600	\$6,261
PC 9	Fence and road maintenance	LP-4	yes	\$1,500	\$300
PC 10	Noxious weed control	LP-4	yes	\$2,500	\$2,556
PC 11	Mowing	LP-4	yes	\$5,000	\$2,960

Priority Area: Operations and Maintenance**Item(s): *Agricultural Operations***

No.	Management Activities	Budget Line Item	Completed	Cost (Estimated)	Cost (Actual)
PC 12	Oversight of grazing and cropland leases	N/A	yes	N/A	N/A

Priority Area: *Unplanned Expenses*

Tract No.	Management Activities	Item:	Budget Line Item	Cost (Actual)
2009003	Brush spraying	Whooping Crane	LP-2	\$2,947

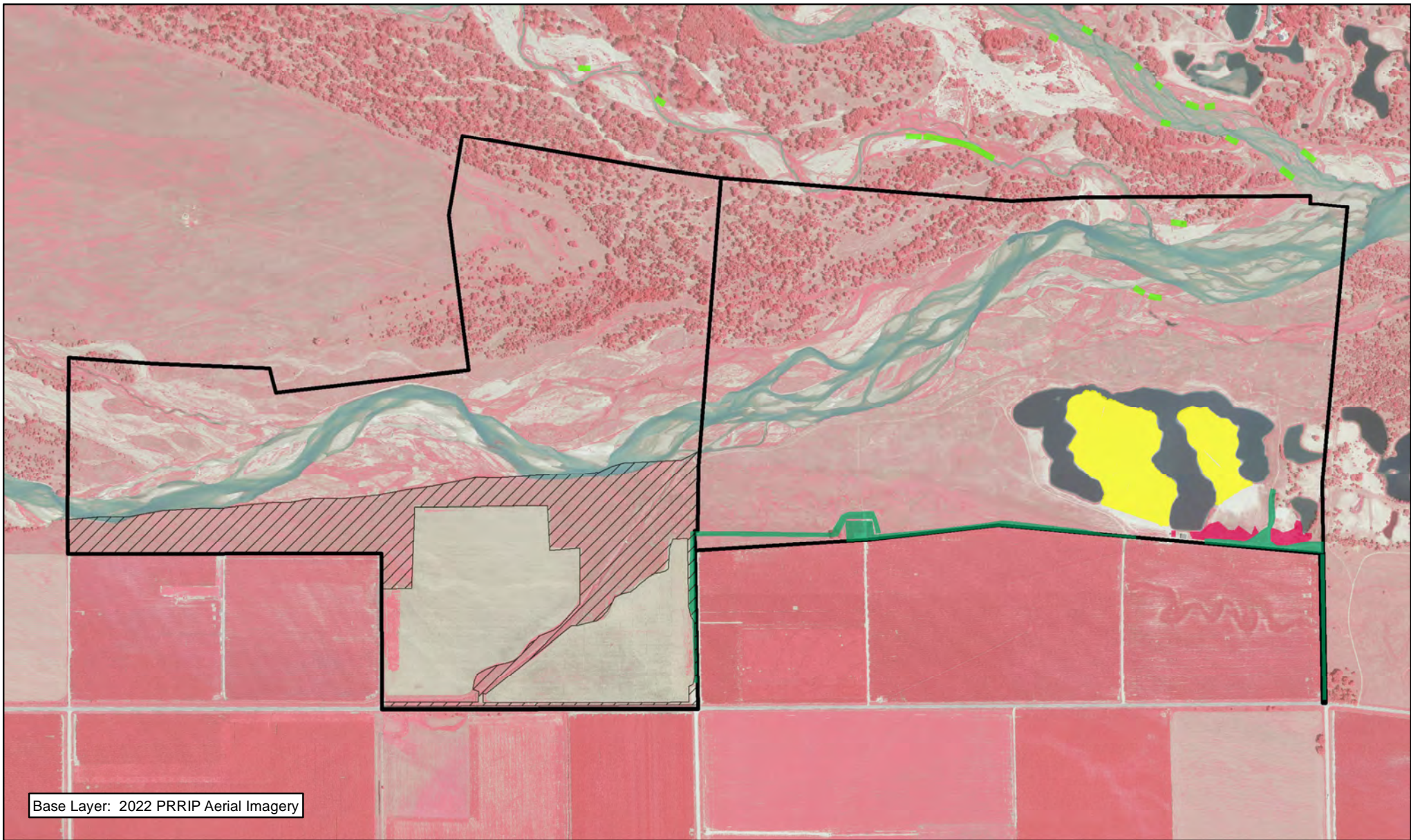
2022 Plum Creek Complex Budget Summary

Expenditures by Program Budget Line Item

Priority Area	Item	Budget Line Item	Estimated Expenditure	Actual Expenditure
Species Habitat	Maintain Suitable In- and Off-Channel Sand & Water Habitat	LP-2	\$8,500	\$4,614
Species Habitat	Target Species Sand and Water Habitat	LP-2	\$25,000	\$20,000
Species Habitat	Whooping Crane Wet Meadow/ Grassland Habitat	LP-2	\$5,700	\$2,947
		Subtotal	\$39,200	\$27,561
Operations and Maintenance	Property Maintenance and Agricultural Operations	LP-4	\$14,600	\$12,077
		Total	\$53,800	\$39,638

Income

Tract	Item	Estimated Income	Actual Income
Tract 2009003	Grazing Income	\$0	\$0
Tract 2009007	Haying Income	\$3,000	\$2,003
Tract 2009007	Grazing Income		\$990
Tract 2009007	Cropland Income	\$5,550	\$6,105
Total		\$8,550	\$9,098



Base Layer: 2022 PRRIP Aerial Imagery



PLATTE RIVER
RECOVERY IMPLEMENTATION PROGRAM

Legend

- Tree Removal
- PVWMA Phrag Control
- Herbicide
- Preemergent
- Shredding/Mowing
- Noxious Weed Control



0.5 Miles

PLUM CREEK COMPLEX FY 2022 ACTIVITIES

Date: 01/24/2023
By: TRT

Figure 9

2022 Cottonwood Ranch Complex Annual Work Plan Report

General Priorities

- * **Good Neighbor Policy** - *Conduct all actions in accordance with Program's good neighbor policy.*

Adaptive Management Priorities

- * **Species Monitoring** – Monitor whooping crane use of riverine and off-channel palustrine wetland roosting habitat and least tern and piping plover use and productivity at off-channel sand and water nesting sites.

Species Habitat Priorities

- * **Maintain Target Species Sand and Water Habitat** – Application of pre-emergent herbicide on OCSW peninsula to maintain tern and plover nesting habitat. Control in-channel vegetation to maintain suitable unobstructed view widths for whooping cranes.
- * **Broad-Scale Recharge Water Supply and Whooping Crane Habitat Project** – *Operation of the broad-scale recharge project will occur in 2022 with targeted fills during the fall and spring whooping crane migrations, and during other times of excess flows in the Platte River.*
- * **Management of grassland/wet meadow habitat for whooping cranes and sandhill cranes** – *Grazing will be deferred on Lloyd Island for the 2022 grazing season. Wet meadow areas in Section 16 T8N R19W (Tracts 2008002 and 2010001) will be grazed/hayed during the 2022 due to the completion of the Broad -Scale Recharge Water Supply and Whooping Crane Habitat Project construction.*
- * **Protecting Other Species of Concern** – Identify presence of and determine methods to protect other species of concern during implementation of land-related activities.

Operations and Maintenance Priorities

- * **Basic Property Maintenance Obligations and Needs** – Fulfill basic property ownership obligations and needs on Tracts 2008002, 2009006, and 2010001 including fence and road maintenance and noxious weed control.
- * **Agricultural Operations** – Oversight of grazing/ haying leases on Tracts 2009006 and 2010001.

NOTE: The budget section of this work plan only contains information for work items that are specific to these tracts. As such, tract-specific research and monitoring actions are presented but system-scale actions like target species and geomorphology/vegetation monitoring are not.

Priority Area: General

Item(s): *Complex Land Interest and Complex-Level Planning*

No.	Management Activities	Budget Line Item	Completed	Cost (Estimated)	Cost (Actual)
CR 1	Coordination of Program land actions with neighboring landowners	N/A	yes	N/A	N/A

Priority Area: Species Habitat

Item(s): *Improve Target Species Sand and Water Habitat*

No.	Management Activities	Budget Line Item	Completed	Cost (Estimated)	Cost (Actual)
CR 2	Tract 2008002 Pre-emergent herbicide application on plover nesting island (2 ac) and OCSW area (17 ac).	LP-2	yes	\$4,000	\$4,037
CR 3	In channel tree, cattail herbicide spraying	LP-2	no	\$12,000	\$0

Priority Area: Species Habitat**Item(s):** *Whooping Crane Grassland / Wet Meadow Habitat*

No.	Management Activities	Budget Line Item	Completed	Cost (Estimated)	Cost (Actual)
CR 4	Brush, tree, cattail herbicide spraying	LP-2	yes	\$10,000	\$425
CR 5	Tract 2010001 Prescribed burn (135 ac)	LP-2	no	\$5,535	\$0
CR 6	Tract 2010001 Prescribed burn (15 ac)	LP-2	no	\$615	\$0

Item(s): Other Species of Concern

No.	Management Activities	Budget Line Item	Completed	Cost (Estimated)	Cost (Actual)
CR 7	Habitat and species surveys on properties where work will occur	N/A	N/A	N/A	N/A
CR 8	Coordination with USFWS and NGPC to identify and mitigate potential impacts associated with land activities	N/A	N/A	N/A	N/A

Priority Area: Operations and Maintenance**Item(s):** *Basic Property Maintenance Obligations and Needs*

No.	Management Activities	Budget Line Item	Completed	Cost (Estimated)	Cost (Actual)
CR 9	Fence and road maintenance	LP-4	yes	\$10,000	\$9,266
CR 10	Noxious weed control	LP-4	yes	\$14,500	\$21,801
CR 11	Mowing	LP-4	yes	\$5,000	\$19,795
CR 12	Tract 2010001 Electricity	LP-4	yes	\$1,000	\$1,304

Priority Area: Operations and Maintenance**Item(s):** *Agricultural Operations*

No.	Management Activities	Budget Line Item	Completed	Cost (Estimated)	Cost (Actual)
CR 13	Tract 2009006 grazing lease oversight	N/A	yes	N/A	N/A
CR 14	Tract 2010001 grazing lease oversight	N/A	yes	N/A	N/A
CR 15	Tract 2010001 haying lease oversight	N/A	yes	N/A	N/A
CR 16	Tract 20008002 grazing & haying lease planning & oversight	N/A	yes	N/A	N/A

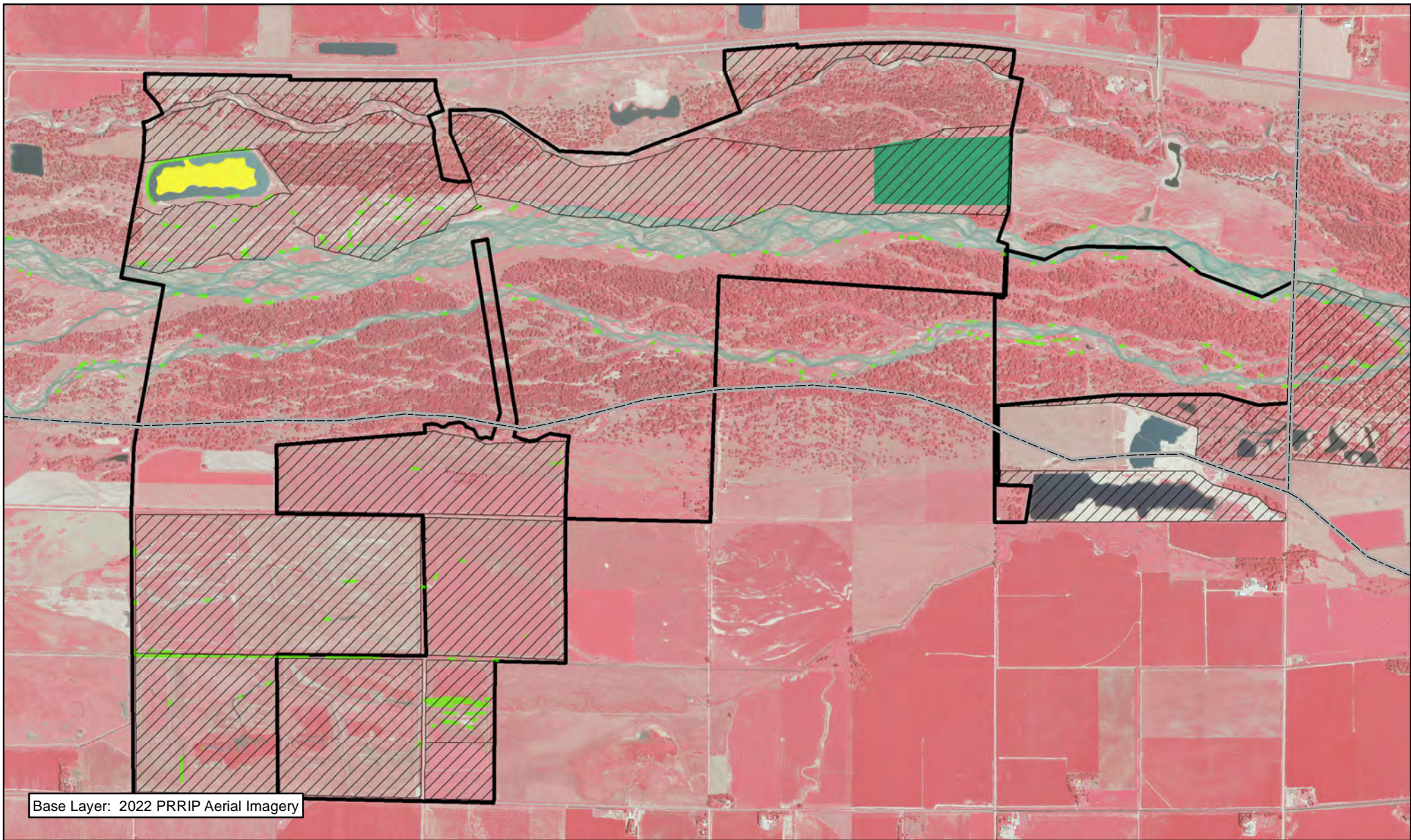
2022 Cottonwood Ranch Complex Budget Summary

Expenditures by Program Budget Line Item







Priority Area	Item	Budget Line Item	Estimated Expenditure	ActualExpenditure
Species Habitat	Target Species Sand and Water Habitat	LP-2	\$16,000	\$4,037
Species Habitat	Whooping Crane Wet Meadow/ Grassland Habitat	LP-2	\$16,150	\$425
		Subtotal	\$32,150	\$4,462
Operations and Maintenance	Property Maintenance and Agricultural Operations	LP-4	\$30,500	\$52,166
		Total	\$62,650	\$56,628

Income


Tract	Item	Estimated Income	Actual Income
Tract 2009006	Grazing Income	\$2,000	\$0
Tract 2010001	Grazing Income	\$0	\$3,750
Tract 2010001 SE 1/4	Grazing Income	\$3,360	\$4,500
Tract 2010001	Haying Income	\$3,000	\$9,157
Total		\$8,360	\$17,407



Legend

- | | |
|---------------------------------------------------------------------------------------------------------|----------------------------------------------------------------------------------------------------------|
|  County |  Noxious Weed Control |
|  Shredding/Mowing |  Herbicide |
|  PVWMA Phrag Control |  Preemergent |



 Miles

1

COTTONWOOD RANCH COMPLEX FY 2022 ACTIVITIES

Date: 01/24/2023
By: TRT

Figure 10

2022 Elm Creek Complex Annual Work Plan Report

General Priorities

- * **Good Neighbor Policy** - Conduct all actions in accordance with Program's good neighbor policy.

Adaptive Management Priorities

- * **Species Monitoring** – Monitor whooping crane use of in-channel roosting habitat and least tern and piping plover use and productivity at off-channel sand and water nesting sites.

Species Habitat Priorities

- * **Maintain Target Species Sand and Water Habitat** – Control in-channel vegetation to maintain suitable unobstructed view widths for whooping cranes.
- * **Protecting Other Species of Concern** – Identify presence of and determine methods to protect other species of concern during implementation of land-related activities.

Operations and Maintenance Priorities

- * **Basic Property Maintenance Obligations and Needs** – Fulfill basic property ownership obligations and needs on Tracts 2009002, 2009005, 2012001 and 2012002 including fence and road maintenance and noxious weed control.
- * **Agricultural Operations** – Oversight of grazing/ haying leases on Tracts 2009005, 2012001 and 2012002.

NOTE: The budget section of this work plan only contains information for work items that are specific to these tracts. As such, tract-specific research and monitoring actions are presented but system-scale actions like target species and geomorphology/vegetation monitoring are not.

Priority Area: General**Item(s):** *Complex Land Interest and Complex-Level Planning*

No.	Management Activities	Budget Line Item	Completed	Cost (Estimated)	Cost (Actual)
EC 1	Coordination of Program land actions with neighboring landowners	N/A	yes	N/A	N/A

Priority Area: Species Habitat**Item(s):** *Improve Target Species Sand and Water Habitat*

No.	Management Activities	Budget Line Item	Completed	Cost (Estimated)	Cost (Actual)
EC 2	No items	N/A	N/A	N/A	N/A

Priority Area: Species Habitat**Item(s):** *Whooping Crane Grassland / Wet Meadow Habitat*

No.	Management Activities	Budget Line Item	Completed	Cost (Estimated)	Cost (Actual)
EC 3	Brush, tree, cattail herbicide spraying	LP-2	yes	\$5,000	\$4,607
EC 4	Tract 2009002 Prescribed burn (35 ac)	LP-2	no	\$1,440	\$0
EC 5	Tract 2012002 Prescribed burn (143 ac)	LP-2	no	\$5,883	\$0

Priority Area: Species Habitat**Item(s): Other Species of Concern**

No.	Management Activities	Budget Line Item	Completed	Cost (Estimated)	Cost (Actual)
EC 6	Habitat and species surveys on properties where work will occur	N/A	N/A	N/A	N/A
EC 7	Coordination with USFWS and NGPC to identify and mitigate potential impacts associated with land activities	N/A	N/A	N/A	N/A

Priority Area: Operations and Maintenance**Item(s): Basic Property Maintenance Obligations and Needs**

No.	Management Activities	Budget Line Item	Completed	Cost (Estimated)	Cost (Actual)
EC 8	Tract 2009002 building utilities and maintenance	LP-4	yes	\$3,000	\$3,459
EC 9	Fence and road maintenance	LP-4	no	\$2,000	\$0
EC 10	Mowing	LP-4	yes	\$3,000	\$1,295
EC 11	Noxious weed control	LP-4	yes	\$5,500	\$16,825

Priority Area: Operations and Maintenance**Item(s): Agricultural Operations**

No.	Management Activities	Budget Line Item	Completed	Cost (Estimated)	Cost (Actual)
EC 12	Tract 2009002 crop lease oversight	N/A	yes	N/A	N/A
EC 13	Tract 2009005 grazing lease oversight	N/A	yes	N/A	N/A
EC 14	Tract 2012001 haying lease oversight	N/A	yes	N/A	N/A
EC 15	Tract 2012002 grazing lease oversight	N/A	yes	N/A	N/A

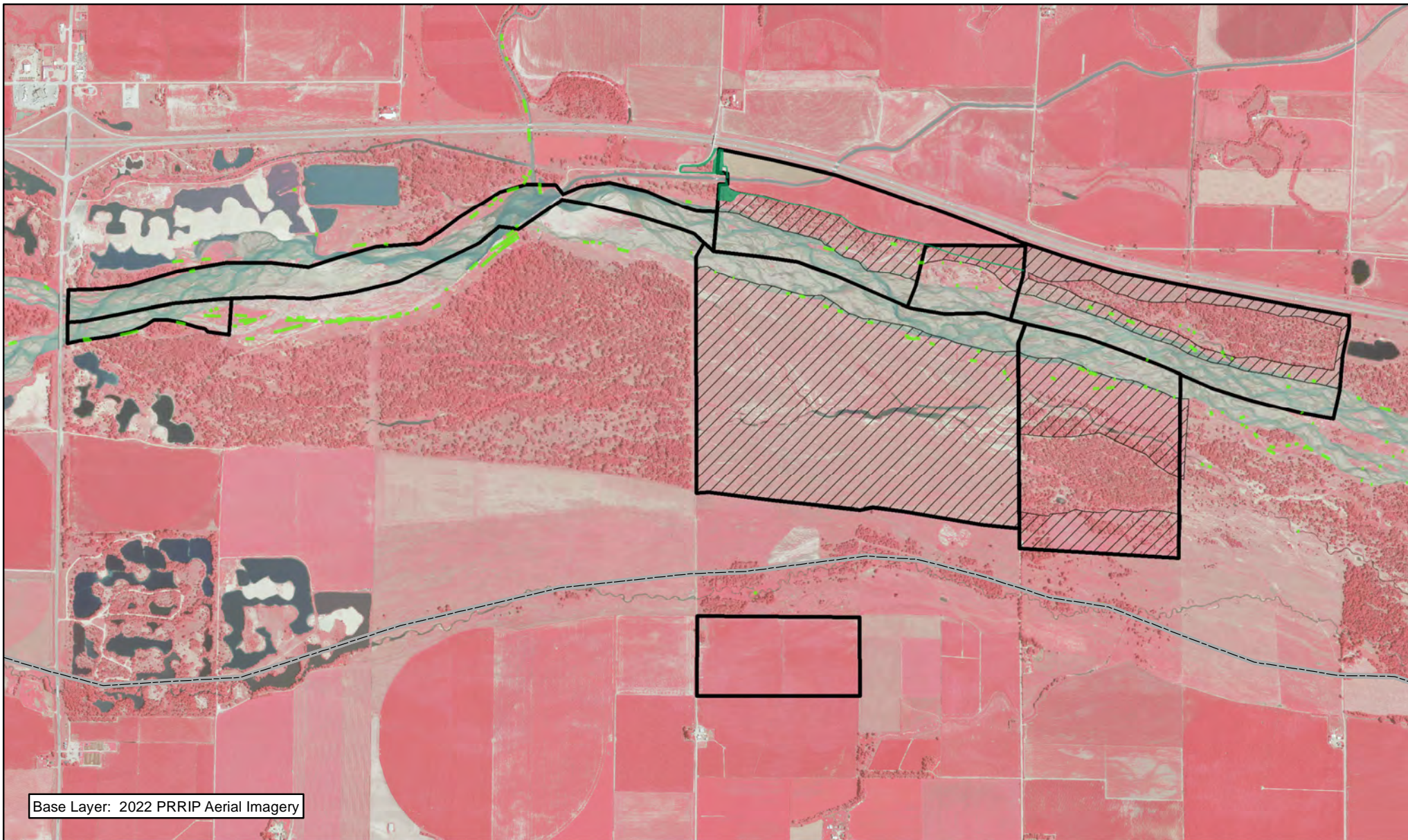
2022 Elm Creek Complex Budget Summary

Expenditures by Program Budget Line Item

Priority Area	Item	Budget Line Item	Estimated Expenditure	Actual Expenditure
Species Habitat	Target Species Sand and Water Habitat	LP-2	\$0	\$0
Species Habitat	Whooping Crane Wet Meadow/ Grassland Habitat	LP-2	\$12,323	\$4,607
		Subtotal	\$12,323	\$4,607
Operations and Maintenance	Property Maintenance and Agricultural Operations	LP-4	\$13,500	\$21,579
		Total	\$25,823	\$26,186

Income



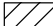

Tract	Item	Estimated Income	Actual Income
Tract 2009002	Crop Income	\$4,350	\$4,640
Tract 2009005	Grazing Income	\$3,500	\$4,200
Tract 2012001	Haying Income	\$2,000	\$0
Tract 2012002	Grazing Income	\$6,075	\$6,075
		Total	\$15,925
			\$14,915




Base Layer: 2022 PRRIP Aerial Imagery



Legend

-  County
-  PVWMA Phrag Control
-  Noxious Weed Control
-  Shredding/Mowing



 Miles

1

ELM CREEK COMPLEX FY 2022 ACTIVITIES

Date: 01/24/2023
By: TRT

Figure 11

2022 Jerry F. Kenny Pawnee Complex Annual Work Plan Report

General Priorities

- * **Good Neighbor Policy** - Conduct all actions in accordance with Program's good neighbor policy.

Adaptive Management Priorities

- * **Species Monitoring** – Monitor whooping crane use of in-channel roosting habitat.

Species Habitat Priorities

- * **Maintain Target Species Sand and Water Habitat** – Control in-channel vegetation to maintain suitable unobstructed view widths for whooping cranes. Remove vegetation from overbank areas adjacent to the channel to promote channel widening through lateral erosion.
- * **Protecting Other Species of Concern** – Identify presence of and determine methods to protect other species of concern during implementation of land-related activities.

Operations and Maintenance Priorities

- * **Basic Property Maintenance Obligations and Needs** – Fulfill basic property ownership obligations and needs on Tracts 2014002 and 2015002.
- * **Agricultural Operations** – Oversight of grazing/ haying leases on Tracts 2014002 and 2015002.

NOTE: The budget section of this work plan only contains information for work items that are specific to these tracts. As such, tract-specific research and monitoring actions are presented but system-scale actions like target species and geomorphology/vegetation monitoring are not.

Priority Area: General**Item(s):** *Complex Land Interest and Good Neighbor Policy*

No.	Management Activities	Budget Line Item	Completed	Cost (Estimated)	Cost (Actual)
PAW 1	Coordination of Program land actions with neighboring landowners	N/A	yes	N/A	N/A

Priority Area: Adaptive Management & Target Species Habitat**Item(s):** *Tern, Plover and Whooping Crane Riverine Habitat Experiments*

No.	Management Activities	Budget Line Item	Completed	Cost (Estimated)	Cost (Actual)
PAW 2	Herbicide treatment on south bank to kill vegetation prior to disking (28 ac)	LP-2	yes	\$6,200	\$4,103
PAW 3	In-channel island cross disking to facilitate erosion (20 ac)	LP-2	yes	\$6,100	\$11,750
PAW 4	Remove trees along the northern edge of riparian area	LP-2	no	\$25,000	\$0

Priority Area: Species Habitat**Item(s):** *Whooping Crane Grassland / Wet Meadow Habitat*

No.	Management Activities	Budget Line Item	Completed	Cost (Estimated)	Cost (Actual)
PAW 5	Tract 2014002 Prescribed burn (42 ac)	LP-2	No	\$1,728	\$0
PAW 6	Tract 2015002 Prescribed burn (8 ac)	LP-2	No	\$329	\$0

Priority Area: Species Habitat**Item(s):** *Other Species of Concern*

No.	Management Activities	Budget Line Item	Completed	Cost (Estimated)	Cost (Actual)
PAW 7	Habitat and species surveys on properties where work will occur	N/A	N/A	N/A	N/A
PAW 8	Coordination with USFWS and NGPC to identify and mitigate potential impacts associated with land activities	N/A	N/A	N/A	N/A

Priority Area: Operations and Maintenance**Item(s):** *Basic Property Maintenance Obligations and Needs*

No.	Management Activities	Budget Line Item	Completed	Cost (Estimated)	Cost (Actual)
PAW 9	Noxious weed control	LP-4	yes	\$2,500	\$5,232
PAW 10	Fence and road maintenance	LP-4	no	\$4,000	\$0
PAW 11	Mowing	LP-4	no	\$1,000	\$0

Priority Area: Operations and Maintenance**Item(s):** *Agricultural Operations*

No.	Management Activities	Budget Line Item	Completed	Cost (Estimated)	Cost (Actual)
PAW 12	Tract 2014002 grazing lease oversight	N/A	yes	N/A	N/A
PAW 13	Tract 2015002 grazing lease oversight	N/A	yes	N/A	N/A
PAW 14	Tract 2015002 haying lease oversight	N/A	yes	N/A	N/A

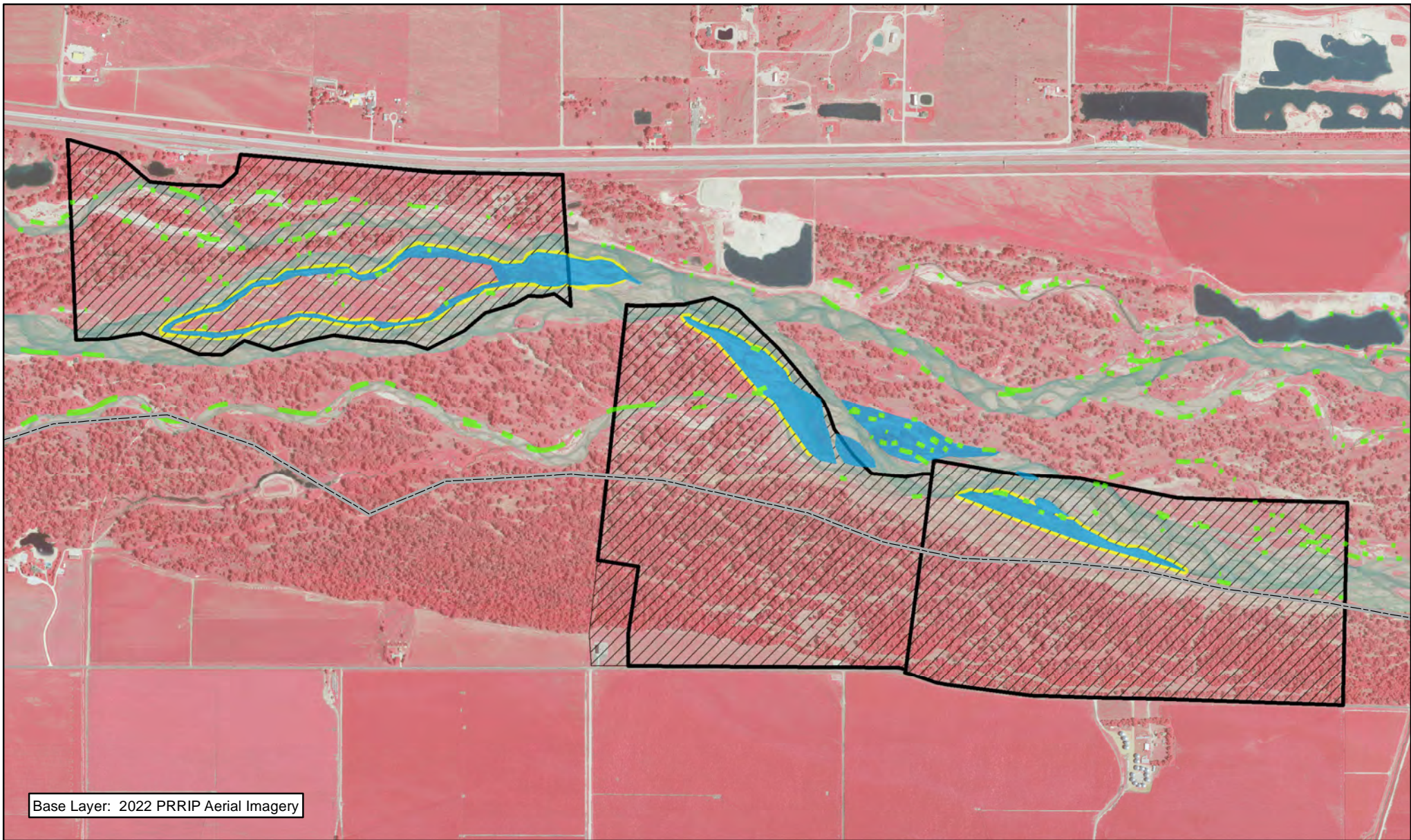
2022 Jerry F. Kenny Pawnee Complex Budget Summary

Expenditures by Program Budget Line Item

Priority Area	Item	Budget Line Item	Estimated Expenditure	Actual Expenditure
Adaptive Management & Species Habitat	Target Species Sand and Water Habitat	LP-2	\$37,300	\$15,853
Species Habitat	Whooping Crane Grassland / Wet Meadow Habitat	LP-2	\$2,057	\$0
		Subtotal	\$39,357	\$15,853
Operations and Maintenance	Property Maintenance and Agricultural Operations	LP-4	\$7,500	\$5,232
		Total	\$46,857	\$21,085

Income






Tract	Item	Estimated Income	Actual Income
Tract 2015002	Haying Income	\$585	\$636
Tract 2014002 & 2015002	Grazing Income	\$3,188	\$2,347
		Total	\$3,773
			\$2,983




Base Layer: 2022 PRRIP Aerial Imagery



Legend

-  County
-  Preemergent
-  Disking
-  PVWMA Phrag Control
-  Noxious Weed Control



 Miles
0.5

JERRY F. KENNY
PAWNEE COMPLEX
FY 2022 ACTIVITIES

Date: 01/24/2023
By: TRT

Figure 12

2022 Fort Kearny Complex Annual Work Plan Report

General Priorities

- * **Good Neighbor Policy** - Conduct all actions in accordance with Program's good neighbor policy.

Adaptive Management Priorities

- * **Species Monitoring** – Monitor whooping crane use of off-channel palustrine wetlands and in-channel roosting habitat.

Species Habitat Priorities

- * **Maintain Target Species Sand and Water Habitat** – Control in-channel vegetation to maintain suitable unobstructed view widths for whooping cranes. Remove vegetation from overbank areas adjacent to the channel to promote channel widening through lateral erosion.
- * **Protecting Other Species of Concern** – Identify presence of and determine methods to protect other species of concern during implementation of land-related activities.

Operations and Maintenance Priorities

- * **Basic Property Maintenance Obligations and Needs** – Fulfill basic property ownership obligations and needs on Tracts 2008001, 2009001, 2009004, 2010003, 2012003 and 2015001 including fence and road maintenance and noxious weed control.
- * **Agricultural Operations** – Oversight of grazing/haying leases on Tracts 2008001, 2012003, 2009001, 2009004, and 2015001.

NOTE: The budget section of this work plan only contains information for work items that are specific to these tracts. As such, tract-specific research and monitoring actions are presented but system-scale actions like target species and geomorphology/vegetation monitoring are not.

Priority Area: General**Item(s):** *Complex Land Interest and Good Neighbor Policy*

No.	Management Activities	Budget Line Item	Completed	Cost (Estimated)	Cost (Actual)
FK 1	Coordination of Program land actions with neighboring landowners	N/A	yes	N/A	N/A

Priority Area: Species Habitat**Item(s):** *Improve Target Species Sand and Water Habitat*

No.	Management Activities	Budget Line Item	Completed	Cost (Estimated)	Cost (Actual)
FK 2	Herbicide treatment on perimeter of cleared islands to kill vegetation prior to disking (6 ac)	LP-2	no	\$1,500	\$0
FK 3	In-channel island cross disking to facilitate erosion (7 ac)	LP-2	yes	\$1,700	\$15,325

Priority Area: Species Habitat**Item(s):** *Whooping Crane Grassland / Wet Meadow Habitat*

No.	Management Activities	Budget Line Item	Completed	Cost (Estimated)	Cost (Actual)
FK 4	Tract 2009001 Annual electrical service fee at irrigation well to supplement water to wetland	LP-2	yes	\$4,000	\$2,068
FK 5	Brush, tree, cattail herbicide spraying	LP-2	yes	\$10,000	\$1,360
FK 6	Tract 2008001- Prescribe burn (103 ac)	LP-2	no	\$4,223	\$0
FK 7	Tract 2009004- Prescribe burn (225 ac)	LP-2	no	\$9,257	\$0
FK 8	Tract 2010003- Prescribe burn (77 ac)	LP-2	no	\$3,157	\$0

FK 9	Tract 2015001 NE unit Prescribe burn (55 ac)	LP-2	no	\$2,263	\$0
FK 10	Tract 2015001 South unit Prescribe burn (180 ac)	LP-2	no	\$7,380	\$0

Priority Area: Species Habitat

Item(s): *Other Species of Concern*

No.	Management Activities	Budget Line Item	Completed	Cost (Estimated)	Cost (Actual)
FK 11	Habitat and species surveys on properties where work will occur	N/A	yes	N/A	N/A
FK 12	Coordination with USFWS and NGPC to identify and mitigate potential impacts associated with land activities	N/A	N/A	N/A	N/A
FK 13	Purchase and Installation of Violet plugs on Tract 2015001	LP-2	yes	\$6,000	\$5,500

Priority Area: Operations and Maintenance

Item(s): *Basic Property Maintenance Obligations and Needs*

No.	Management Activities	Budget Line Item	Completed	Cost (Estimated)	Cost (Actual)
FK 14	Tract 2009004 & 2015001 Electricity	LP-4	yes	\$1,000	\$838
FK 15	Noxious weed control	LP-4	yes	\$15,000	\$11,168
FK 16	Fence and road maintenance	LP-4	yes	\$2,000	\$1,073
FK 17	Mowing	LP-4	no	\$1,000	\$0

Item(s): *Agricultural Operations*

No.	Management Activities	Budget Line Item	Completed	Cost (Estimated)	Cost (Actual)
FK 18	Tract 2008001 grazing lease oversight	N/A	yes	N/A	N/A
FK 19	Tract 2012003 grazing lease oversight	N/A	yes	N/A	N/A
FK 20	Tract 2015001 grazing lease oversight	N/A	yes	N/A	N/A

Priority Area: *Unplanned Expenses*

Tract No.	Management Activities	Item:	Budget Line Item	Cost (Actual)
2015001	Tree pile burn & bury	Whooping Crane	LP-2	\$9,500

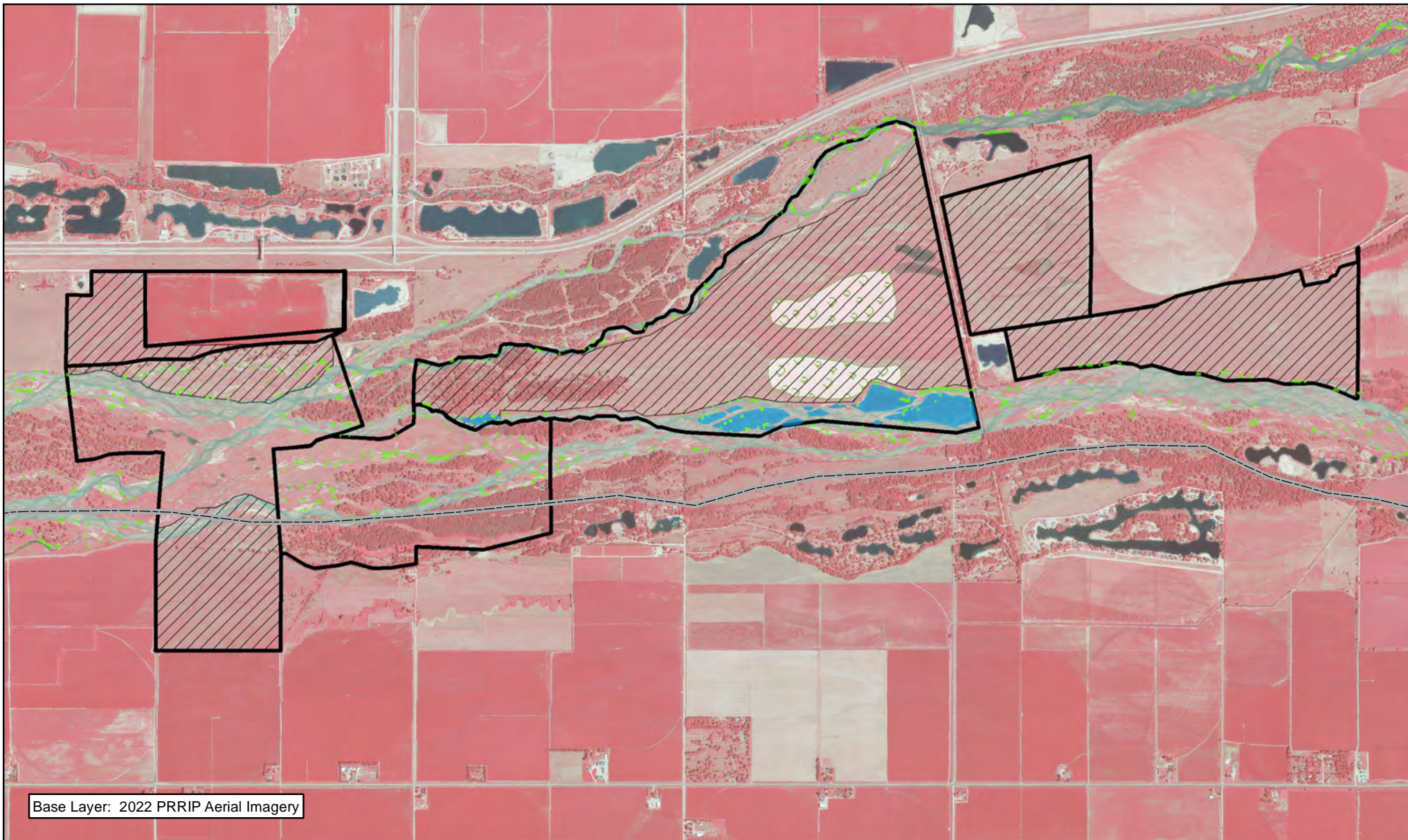
2022 Ft Kearny Complex Budget Summary

Expenditures by Program Budget Line Item

Priority Area	Item	Budget Line Item	Estimated Expenditure	Actual Expenditure
Species Habitat	Improve Sand and Water Habitat	LP-2	\$3,200	\$15,325
Species Habitat	Whooping Crane Wet Meadow/ Grassland Habitat	LP-2	\$40,280	\$12,928
Species Habitat	Other Species of Concern	LP-2	\$6,000	\$5,500
Subtotal			\$49,480	\$33,753
Operations and Maintenance	Property Maintenance and Agricultural Operations	LP-4	\$19,000	\$13,079
Total			\$68,480	\$46,832





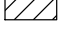
Income

Tract	Item	Estimated Income	Actual Income
Tract 2008001 N & 2012003	Grazing Income	\$6,500	\$5,753
Tract 2008001 S	Haying Income	\$7,000	\$6,624
Tract 2009001	Grazing Income	\$6,820	\$8,000
Tract 2009004	Grazing Income	\$11,275	\$15,678
Tract 2012003	Cropland Income	\$1,800	\$1,900
Tract 2015001	Grazing Income	\$11,250	\$11,250
Total		\$44,645	\$49,205




PLATTE RIVER
RECOVERY IMPLEMENTATION PROGRAM

Legend

-  County
-  Violet Planting
-  Disking
-  PVWMA Phrag Control
-  Noxious Weed Control



 Miles

1

FT. KEARNY COMPLEX FY 2022 ACTIVITIES

Date: 01/24/2023
By: TRT

Figure 13

2022 Minden – Gibbon Management Agreement Annual Work Plan

Adaptive Management Priorities

- * **Species Monitoring** – Monitor whooping crane use of in-channel roosting habitat.

Species Habitat Priorities

- * **Maintain Target Species Sand and Water Habitat** – Control in-channel vegetation to maintain suitable unobstructed view widths for whooping cranes.

Priority Area: Species Habitat

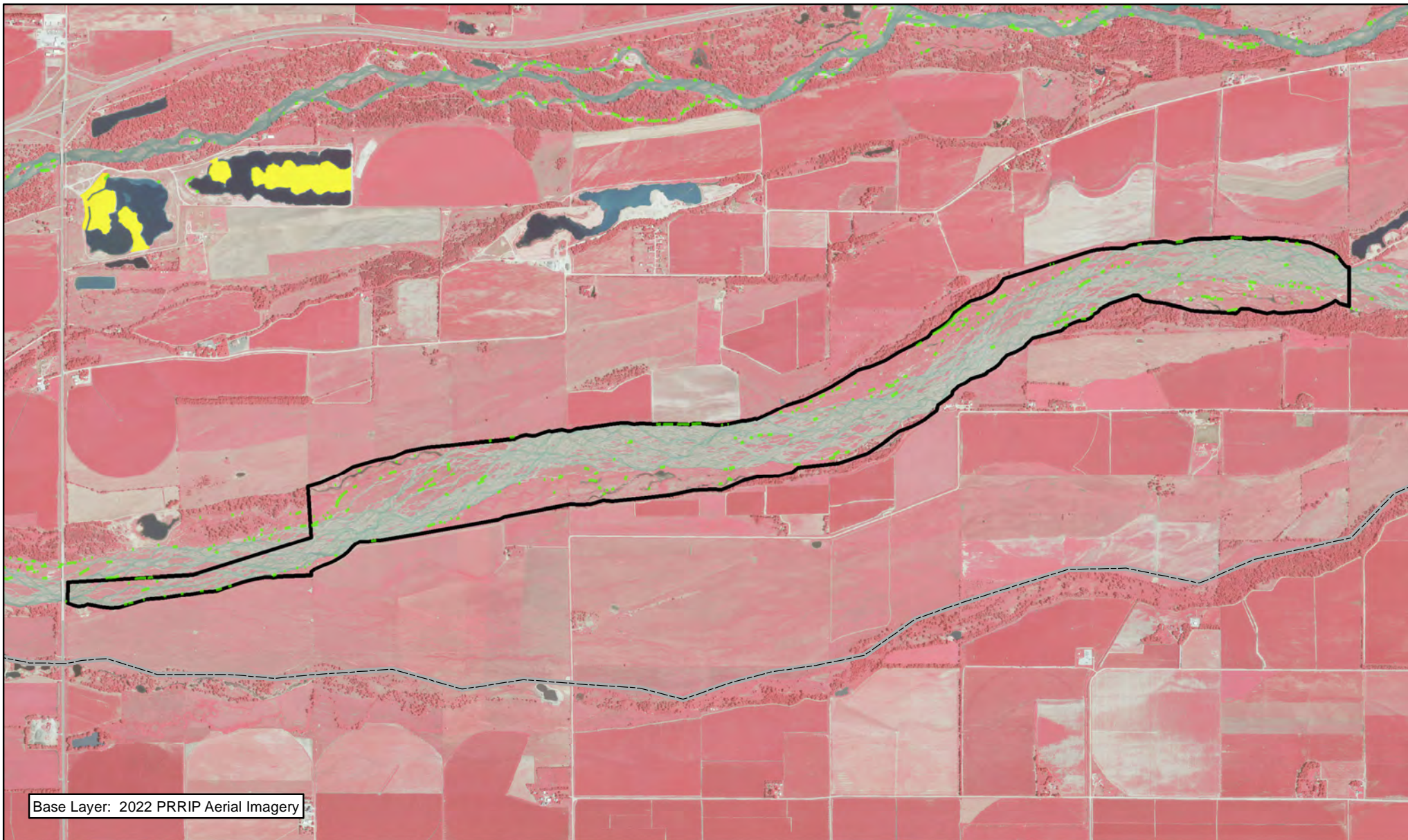
Item(s): *Improve Target Species Sand and Water Habitat*

No.	Management Activities	Budget Line Item	Completed	Cost (Estimated)	Cost (Actual)
M-G 1	Brush, tree, cattail herbicide spraying	LP-2	no	\$5,000	\$0

2022 Minden-Gibbon Management Agreement Budget Summary

Expenditures by Program Budget Line Item




Priority Area	Item	Budget Line Item	Estimated Expenditure	Actual Expenditure
Species Habitat	Improve Target Species Sand and Water Habitat	LP-2	\$5,000	\$0
		Total	\$5,000	\$0



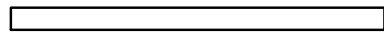
Base Layer: 2022 PRRIP Aerial Imagery



Legend

-  County
-  PVWMA Phrag Control
-  Preemergent



 Miles

1

MINDEN-GIBBON COMPLEX FY 2022 ACTIVITIES

Date: 01/24/2023
By: TRT

Figure 14

2022 Clark Island Complex Annual Work Plan Report

General Priorities

- * **Complex Land Interest** - Execute management agreements with conservation and private landowners that will allow the Program to implement necessary construction, maintenance and research/monitoring activities.
- * **Good Neighbor Policy** - Conduct all actions in accordance with Program's good neighbor policy.

Adaptive Management Priorities

- * **Whooping Crane Riverine Habitat** – Design and implement vegetation clearing to provide a range of unobstructed view widths above the Programs minimums
- * **Species Monitoring** – Monitor whooping crane use of palustrine wetlands and in-channel roosting habitat.

Species Habitat Priorities

- * **Maintain Target Species Sand and Water Habitat** – Control in-channel vegetation to maintain suitable unobstructed view widths for whooping cranes.
- * **Protecting Other Species of Concern** – Identify presence of and determine methods to protect other species of concern during implementation of land-related activities.

Operations and Maintenance Priorities

- * **Basic Property Maintenance Obligations and Needs** – Fulfill basic property ownership obligations and needs on Tract 2010004 including fence and road maintenance and noxious weed control.
- * **Agricultural Operations** – Oversight of cropland, grazing/ haying leases on Tract 2010004

NOTE: The budget section of this work plan only contains information for work items that are specific to these tracts. As such, tract-specific research and monitoring actions are presented but system-scale actions like target species and geomorphology/vegetation monitoring are not.

Priority Area: General*Item(s): Complex Land Interest and Complex-Level Planning*

No.	Management Activities	Budget Line Item	Completed	Cost (Estimated)	Cost (Actual)
CI 1	Coordination of Program land actions with neighboring landowners	N/A	yes	N/A	N/A

Priority Area: Species Habitat*Item(s): Improve Target Species Sand and Water Habitat*

No.	Management Activities	Budget Line Item	Completed	Cost (Estimated)	Cost (Actual)
CI 2	Herbicide treatment on south bank to kill vegetation prior to disking (18 ac)	LP-2	yes	\$4,000	\$4,003
CI 3	In-channel island cross disking to facilitate erosion (18 ac)	LP-2	yes	\$4,100	\$9,963
CI 4	Clear Trees & Burn, Bury on Islands of neighboring properties pending mgmt	LP-2	no	\$30,000	\$0

Priority Area: Species Habitat*Item(s): Whooping Crane Grassland / Wet Meadow Habitat*

No.	Management Activities	Budget Line Item	Completed	Cost (Estimated)	Cost (Actual)
CR 5	Brush, tree, cattail herbicide spraying	LP-2	yes	\$5,000	\$4,168
CI 6	Tract 2018001 Prescribe burn (252 ac)	LP-2	no	\$10,340	\$0

Priority Area: Species Habitat**Item(s):** *Other Species of Concern*

No.	Management Activities	Budget Line Item	Completed	Cost (Estimated)	Cost (Actual)
CI 7	Habitat and species surveys on properties where work will occur	N/A	N/A	N/A	N/A
CI 8	Coordination with USFWS and NGPC to identify and mitigate potential impacts associated with land activities	N/A	N/A	N/A	N/A

Priority Area: Operations and Maintenance**Item(s):** *Basic Property Maintenance Obligations and Needs*

No.	Management Activities	Budget Line Item	Completed	Cost (Estimated)	Cost (Actual)
CI 9	Clear trees for east boundary fenceline through trees	LP-4	yes	\$20,000	\$2,952
CI 10	Fence and road maintenance	LP-4	yes	\$10,000	\$19,489
CI 11	Noxious weed control	LP-4	yes	\$5,000	\$3,754
CI 12	Mowing	LP-4	no	\$1,000	\$0

Priority Area: Operations and Maintenance**Item(s):** *Agricultural Operations*

No.	Management Activities	Budget Line Item	Completed	Cost (Estimated)	Cost (Actual)
CI 13	Grazing & Haying lease oversight	N/A	yes	N/A	N/A

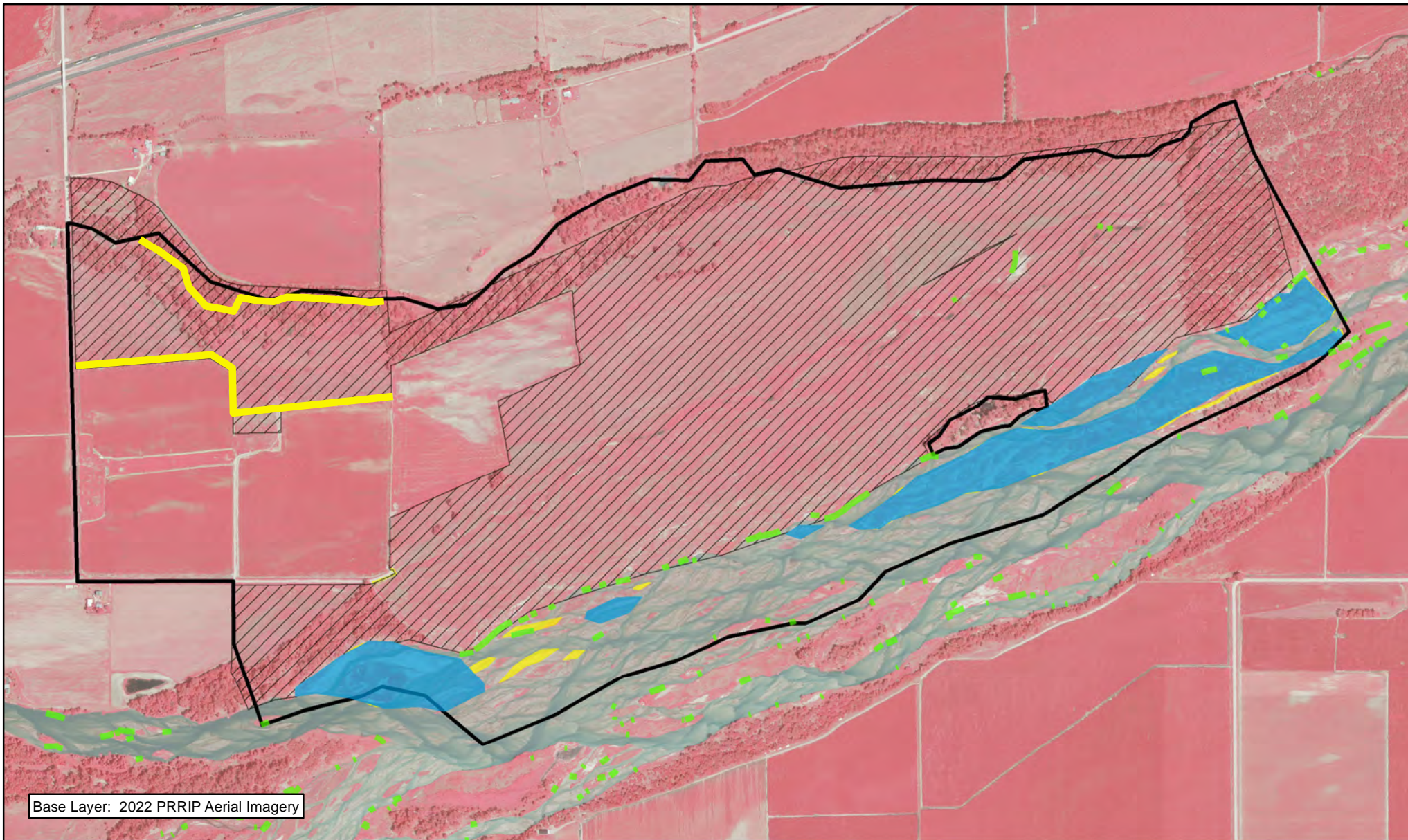
2022 Clark Island Complex Budget Summary

Expenditures by Program Budget Line Item

Priority Area	Item	Budget Line Item	Estimated Expenditure	Actual Expenditure
Species Habitat	Improve Target Species Sand and Water Habitat	LP-2	\$38,100	\$13,966
Species Habitat	Whooping Crane Wet Meadow/ Grassland Habitat	LP-2	\$15,340	\$4,168
		Subtotal	\$53,440	\$18,134
Operations and Maintenance	Property Maintenance and Agricultural Operations	LP-4	\$36,000	\$26,195
		Total	\$89,440	\$44,329

Income

Tract	Item	Estimated Income	Actual Income
Tract 2018001	Meadow Grazing Income	\$7,150	\$0
Tract 2018001	Accretion Grazing Income	\$0	\$0
Tract 2018001	Cropland Cash Rent Income	\$26,190	\$27,865
Total		\$33,340	\$27,865



PLATTE RIVER
RECOVERY IMPLEMENTATION PROGRAM

Legend

- County
- Barbwire Fence Construction
- Diking
- Preemergent
- Noxious Weed Control
- PVWMA Phrag Control



Miles
0.5

CLARK ISLAND COMPLEX FY 2022 ACTIVITIES

Date: 01/24/2023
By: TRT

Figure 15

2022 Shoemaker Island Complex Annual Work Plan Report

General Priorities

- * **Good Neighbor Policy** - *Conduct all actions in accordance with Program's good neighbor policy.*

Adaptive Management Priorities

- * **Species Monitoring** – *Monitor whooping crane use of palustrine wetlands and in-channel roosting habitat.*

Species Habitat Priorities

- * **Maintain Target Species Sand and Water Habitat** – *Control in-channel vegetation to maintain suitable unobstructed view widths for whooping cranes.*
- * **Protecting Other Species of Concern** – *Identify presence of and determine methods to protect other species of concern during implementation of land-related activities.*

Operations and Maintenance Priorities

- * **Basic Property Maintenance Obligations and Needs** – *Fulfill basic property ownership obligations and needs on Tract 2010004 including fence and road maintenance and noxious weed control.*
- * **Agricultural Operations** – *Oversight of grazing/ haying leases on Tract 2010004*

NOTE: The budget section of this work plan only contains information for work items that are specific to these tracts. As such, tract-specific research and monitoring actions are presented but system-scale actions like target species and geomorphology/vegetation monitoring are not.

Priority Area: General**Item(s):** *Complex Land Interest and Complex-Level Planning*

No.	Management Activities	Budget Line Item	Completed	Cost (Estimated)	Cost (Actual)
SI 1	Coordination of Program land actions with neighboring landowners	N/A	yes	N/A	N/A

Priority Area: Species Habitat**Item(s):** *Improve Target Species Sand and Water Habitat*

No.	Management Activities	Budget Line Item	Completed	Cost (Estimated)	Cost (Actual)
SI 2	No items	N/A	N/A	\$0	\$0

Priority Area: Species Habitat**Item(s):** *Whooping Crane Grassland / Wet Meadow Habitat*

No.	Management Activities	Budget Line Item	Completed	Cost (Estimated)	Cost (Actual)
SI 3	Tract 2010004-North 1/2 West Unit Prescribe burn (171 ac)	LP-2	no	\$7,011	\$0
SI 4	Tract 2010004-North 1/2 East Unit Prescribe burn (83 ac)	LP-2	no	\$3,403	\$0
SI 5	Tract 2010004-South Meadow Prescribe burn (57 ac)	LP-2	no	\$2,345	\$0

Priority Area: Species Habitat**Item(s):** *Other Species of Concern*

No.	Management Activities	Budget Line Item	Completed	Cost (Estimated)	Cost (Actual)
SI 6	Habitat and species surveys on properties where work will occur	N/A	N/A	N/A	N/A
SI 7	Coordination with USFWS and NGPC to identify and mitigate potential impacts associated with land activities	N/A	N/A	N/A	N/A

Priority Area: Operations and Maintenance**Item(s):** *Basic Property Maintenance Obligations and Needs*

No.	Management Activities	Budget Line Item	Completed	Cost (Estimated)	Cost (Actual)
SI 8	Fence and road maintenance	LP-4	yes	\$1,000	\$1,050
SI 9	Noxious weed control	LP-4	yes	\$2,500	\$4,009
SI 10	Mowing	LP-4	no	\$1,000	\$0
SI 11	Tract2010004 Electricity	LP-4	yes	\$200	\$247

Priority Area: Operations and Maintenance**Item(s):** *Agricultural Operations*

No.	Management Activities	Budget Line Item	Completed	Cost (Estimated)	Cost (Actual)
SI 12	Grazing & Haying lease oversight	N/A	yes	N/A	N/A

Priority Area: *Unplanned Expenses*

Tract No.	Management Activities	Item:	Budget Line Item	Cost (Actual)
2010004	Cran Viewing blind construction	Whooping Crane	LP-2	\$10,485
	In-channel Disking TNC Dahms	Whooping Crane	LP-2	\$8,175

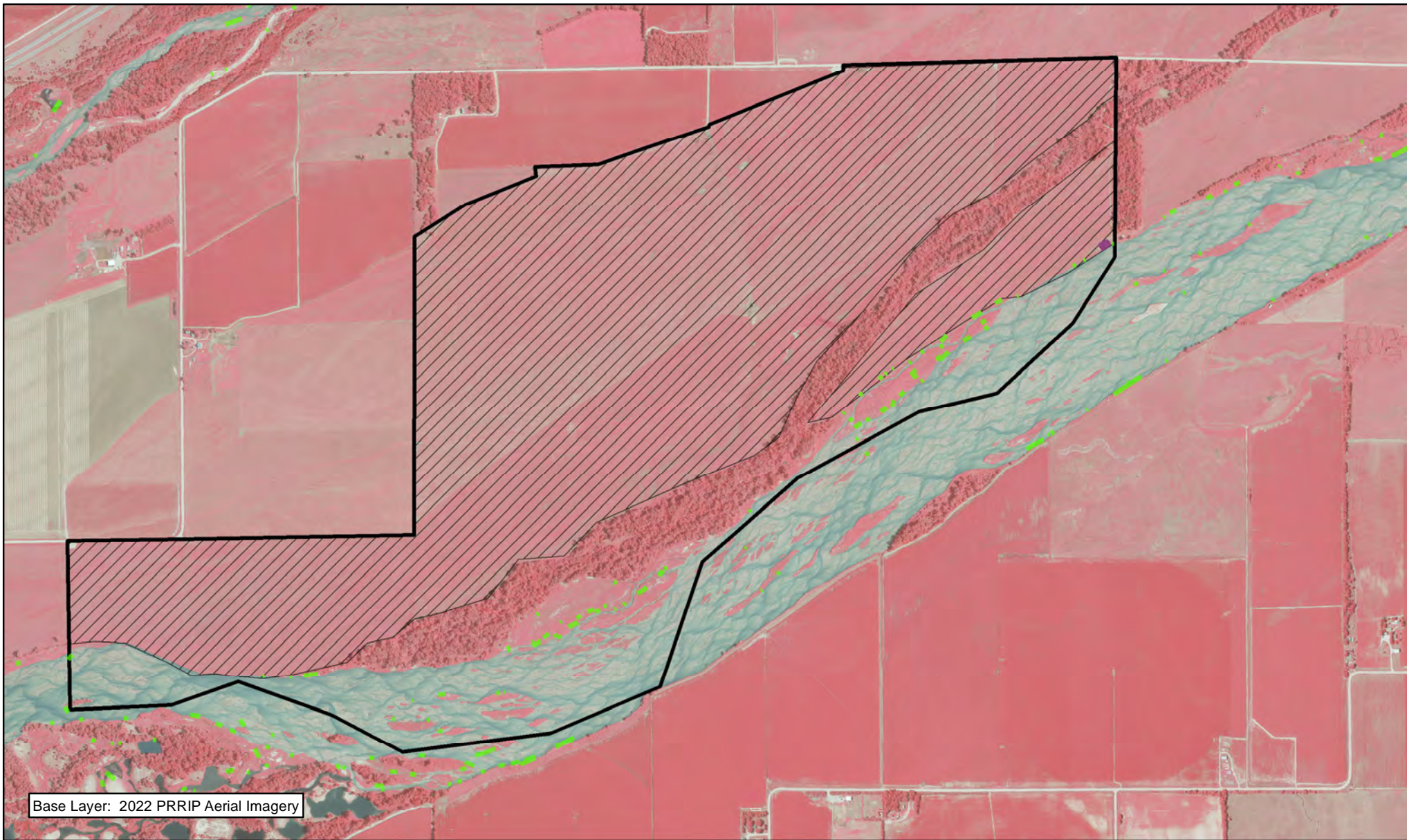
2022 Shoemaker Island Complex Budget Summary

Expenditures by Program Budget Line Item

Priority Area	Item	Budget Line Item	Estimated Expenditure	Actual Expenditure
Species Habitat	Improve Target Species Sand and Water Habitat	LP-2	\$0	\$0
Species Habitat	Whooping Crane Wet Meadow/ Grassland Habitat	LP-2	\$12,759	\$18,660
		Subtotal	\$12,759	\$18,660
Operations and Maintenance	Property Maintenance and Agricultural Operations	LP-4	\$4,700	\$5,306
		Total	\$17,459	\$23,966

Income





Tract	Item	Estimated Income	Actual Income
Tract 2010004	Grazing & Haying Income	\$43,000	\$49,362
		Total	\$43,000
			\$49,362



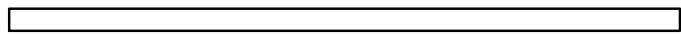
Base Layer: 2022 PRRIP Aerial Imagery



Legend

-  County
-  Crane Viewing Blind
-  Noxious Weed Control
-  PVWMA Phrag Control



 Miles

1

SHOEMAKER ISLAND COMPLEX FY 2022 ACTIVITIES

Date: 01/24/2023
By: TRT

Figure 16

2022 Chapman Complex Annual Work Plan Report

General Priorities

- * **Restoration and Management Planning** – Development of restoration and management plan for Tract 2021001.
- * **Good Neighbor Policy** - Conduct all actions in accordance with Program's good neighbor policy.

Adaptive Management Priorities

- * **Whooping Crane Riverine Habitat** – Design and implement vegetation clearing to provide a range of unobstructed view widths above the Programs minimums
- * **Species Monitoring** – Monitor whooping crane use of palustrine wetlands and in-channel roosting habitat.

Species Habitat Priorities

- * **Improve Target Species Sand and Water Habitat** – Control in-channel vegetation to maintain suitable unobstructed view widths for whooping cranes.
- * **Protecting Other Species of Concern** – Identify presence of and determine methods to protect other species of concern during implementation of land-related activities.

Operations and Maintenance Priorities

- * **Basic Property Maintenance Obligations and Needs** – Fulfill basic property ownership obligations and needs on Tracts including fence and road maintenance and noxious weed control.
- * **Agricultural Operations** – Oversight of grazing/ haying leases

NOTE: The budget section of this work plan only contains information for work items that are specific to these tracts. As such, tract-specific research and monitoring actions are presented but system-scale actions like target species and geomorphology/vegetation monitoring are not.

Priority Area: General**Item(s):** *Complex Land Interest and Complex-Level Planning*

No.	Management Activities	Budget Line Item	Completed	Cost (Estimated)	Cost (Actual)
CC 1	Restoration and Management Planning for Tract 2021001	N/A	yes	N/A	N/A
CC 2	Coordination of Program land actions with neighboring landowners	N/A	yes	N/A	N/A

Priority Area: Species Habitat**Item(s):** *Improve Target Species Sand and Water Habitat*

No.	Management Activities	Budget Line Item	Completed	Cost (Estimated)	Cost (Actual)
CC 3	Herbicide treatment on south bank to kill vegetation prior to disking (46 ac)	LP-2	yes	\$10,100	\$5,900
CC 4	In-channel island cross disking to facilitate erosion (46 ac)	LP-2	no	\$10,000	\$0

Priority Area: Species Habitat**Item(s):** *Whooping Crane Grassland / Wet Meadow Habitat*

No.	Management Activities	Budget Line Item	Completed	Cost (Estimated)	Cost (Actual)
CI 5	Aboveground tree removal in meadow	LP-2	yes	\$20,000	\$21,000

Priority Area: Species Habitat**Item(s):** *Other Species of Concern*

No.	Management Activities	Budget Line Item	Completed	Cost (Estimated)	Cost (Actual)
CC 6	Habitat and species surveys on properties where work will occur	N/A	N/A	N/A	N/A
CC 7	Coordination with USFWS and NGPC to identify and mitigate potential impacts associated with land activities	N/A	N/A	N/A	N/A

Priority Area: Operations and Maintenance**Item(s):** *Basic Property Maintenance Obligations and Needs*

No.	Management Activities	Budget Line Item	Completed	Cost (Estimated)	Cost (Actual)
CC 8	Fence and road maintenance	LP-4	yes	\$20,000	\$59,436
CC 9	Noxious weed control	LP-4	yes	\$10,000	\$1,816
CC 10	Mowing	LP-4	yes	\$1,000	\$1,650

Priority Area: Operations and Maintenance**Item(s):** *Agricultural Operations*

No.	Management Activities	Budget Line Item	Completed	Cost (Estimated)	Cost (Actual)
CC 11	Tract 2019001 grazing lease oversight	N/A	yes	N/A	N/A
CC 12	Tract 2021001 grazing lease oversight	N/A	yes	N/A	N/A
CC 13	Tract 2021001 crop lease oversight	N/A	yes	N/A	N/A

Priority Area: *Unplanned Expenses*

Tract No.	Management Activities	Item:	Budget Line Item	Cost (Actual)
2021001	Furnace diesel reimbursment	Basic Property	LP-4	\$525
2021001	Skidsteer work	Basic Property	LP-4	\$1,303
2021001	Parking area construction	Basic Property	LP-4	\$3,458
2021001	Electricity	Basic Property	LP-4	\$556
2021001	Winterize house	Basic Property	LP-4	\$218
	Rehang gates at entrance of Babb tract	Basic Property	LP-4	\$223

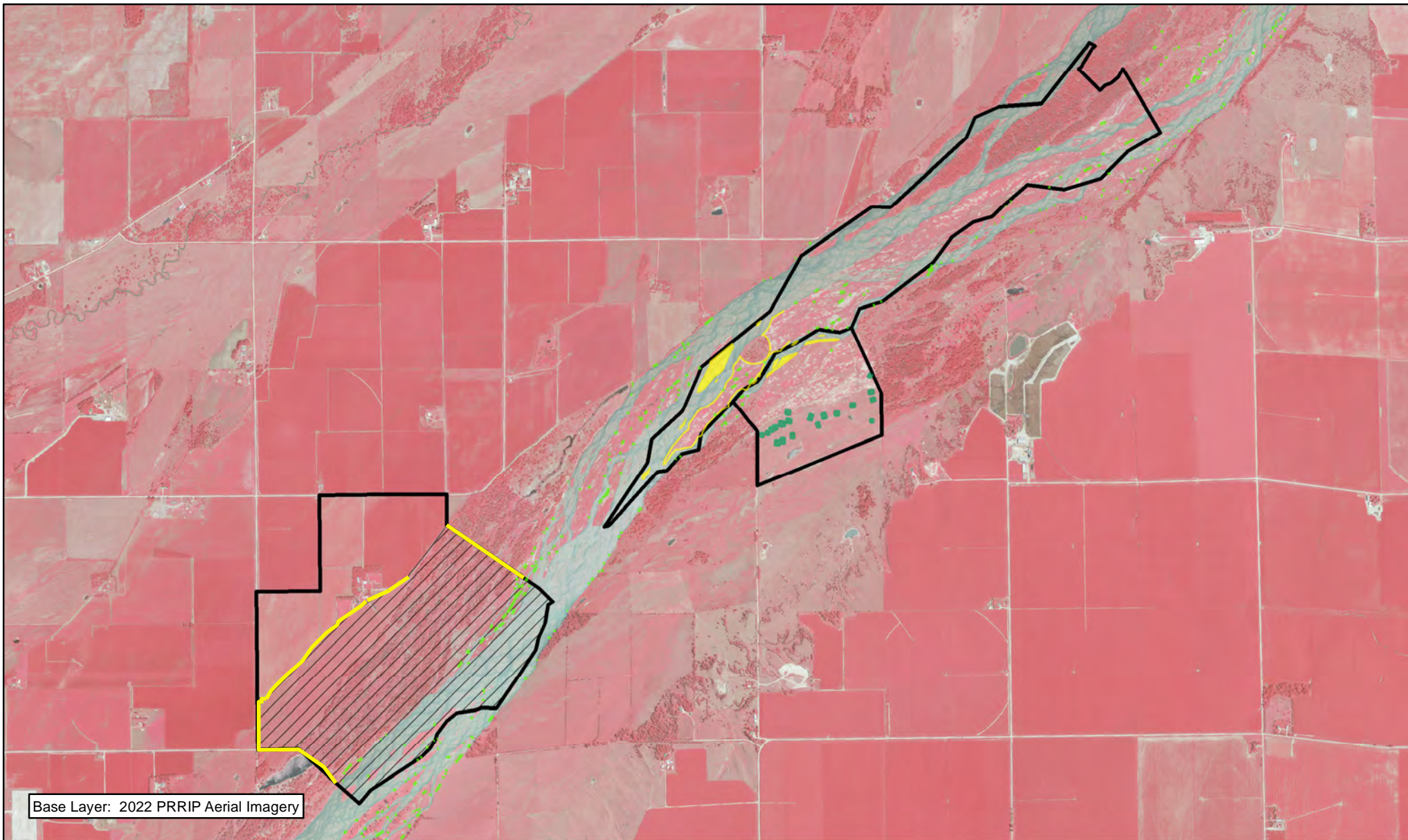
2022 Chapman Complex Budget Summary

Expenditures by Program Budget Line Item

Priority Area	Item	Budget Line Item	Estimated Expenditure	Actual Expenditure
Species Habitat	Improve Target Species Sand & Water Habitat	LP-2	\$20,100	\$5,900
Species Habitat	Whooping Crane Wet Meadow/ Grassland Habitat	LP-2	\$20,000	\$21,000
		Subtotal	\$40,100	\$26,900
Operations and Maintenance	Property Maintenance and Agricultural Operations	LP-4	\$31,000	\$69,185
		Total	\$71,100	\$96,085

Income






Tract	Item	Estimated Income	Actual Income
Tract 2019001	Grazing lease	\$3,640	\$3,300
Tract 2021001	Grazing lease-estimate	\$4,000	\$8,750
Tract 2021001	Irrigated Crop lease-estimate	\$30,358	\$37,750
Tract 2021001	Building Rental	\$0	\$3,465
Total		\$37,998	\$53,265



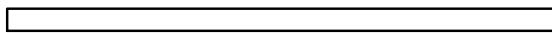
Base Layer: 2022 PRRIP Aerial Imagery



Legend

-  Preemergent
-  Noxious Weed Control
-  Tree Pile Removal
-  PVWMA Phrag Control
-  Barbwire Fence Construction



 1.5 Miles

CHAPMAN COMPLEX FY 2022 ACTIVITIES

Date: 01/24/2022
By: TRT

Figure 17

2022 Water Properties Annual Work Plan Report

General Priorities

- * **Good Neighbor Policy** - Conduct all actions in accordance with Program's good neighbor policy.

Operations and Maintenance Priorities

- * **Basic Property Maintenance Obligations and Needs** – Fulfill basic property ownership obligations and needs on Tracts W2016002, W2017001, W2017002 & W201703 including fence and road maintenance, irrigation management and noxious weed control.
- * **Agricultural Operations** – Oversight of grazing/ haying lease on Tract W2016002

Priority Area: General

Item(s): *Complex Land Interest and Complex-Level Planning*

No.	Management Activities	Budget Line Item	Completed	Cost (Estimated)	Cost (Actual)
WP 1	Coordination of Program land actions with neighboring landowners	N/A	yes	N/A	N/A

Priority Area: Operations and Maintenance

Item(s): *Basic Property Maintenance Obligations and Needs*

No.	Management Activities	Budget Line Item	Completed	Cost (Estimated)	Cost (Actual)
WP 2	Fence and road maintenance	WPLW-1	no	\$1,000	\$0
WP 3	Noxious weed control	WPLW-1	yes	\$5,000	\$6,474
WP 4	Mowing	WPLW-1	no	\$1,000	\$0
WP 5	Tracts W2016002 Electricity	WPLW-1	yes	\$100	\$184
WP 6	Taxes	WPLW-1	yes	\$9,750	\$10,227

Priority Area: Operations and Maintenance

Item(s): *Agricultural Operations*

No.	Management Activities	Budget Line Item	Completed	Cost (Estimated)	Cost (Actual)
WP 7	Tract W201602 Lease Oversight	WPLW-1		N/A	N/A

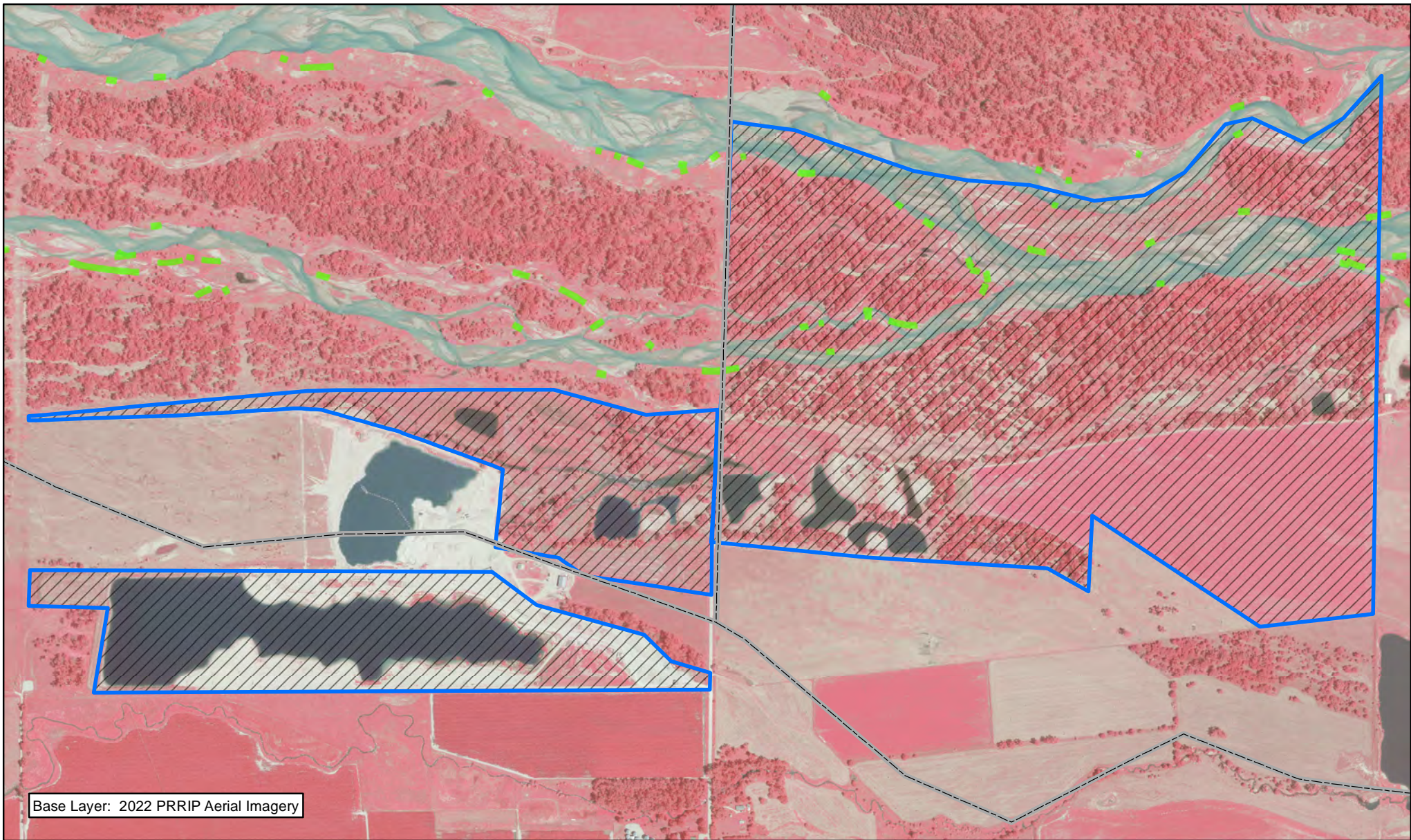
2022 Water Properties Budget Summary

Expenditures by Program Budget Line Item

Priority Area	Item	Budget Line Item	Estimated Expenditure	Actual Expenditure
Operations and Maintenance	Property Maintenance and Agricultural Operations	WPLW-1	\$16,850	\$16,885
		Total	\$16,850	\$16,885

Income



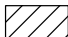
Tract	Item	Estimated Income	Actual Income
Tract W201602	Crop Income	\$9,125	\$10,480
	Total	\$9,125	\$10,480




Base Layer: 2022 PRRIP Aerial Imagery



Legend

-  County
-  PVWMA Phrag Control
-  Noxious Weed Control



 Miles
0.5

WATER TRACTS FY 2022 ACTIVITIES

Date: 01/24/2023
By: TRT

Figure 18